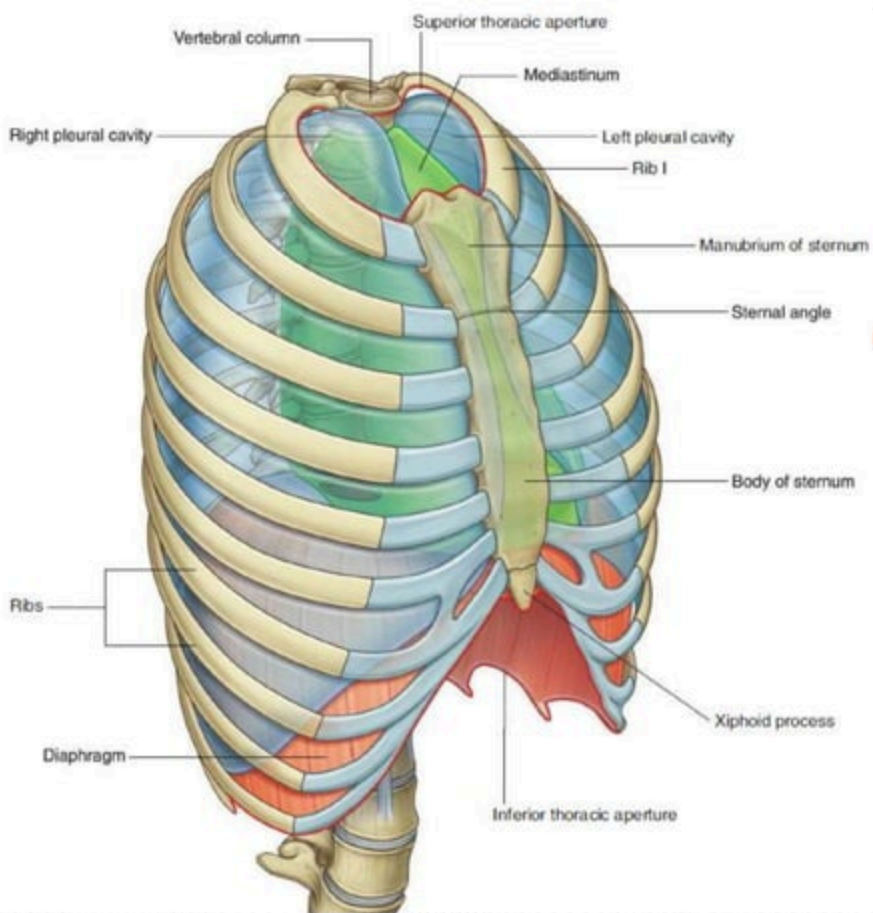
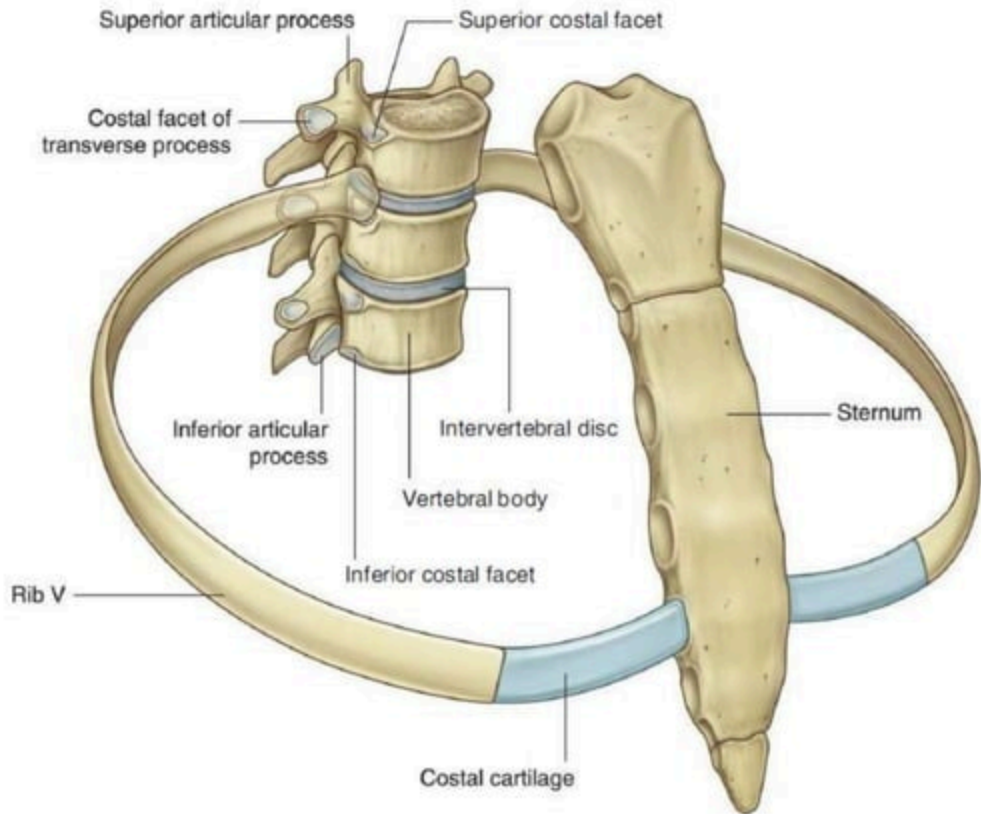
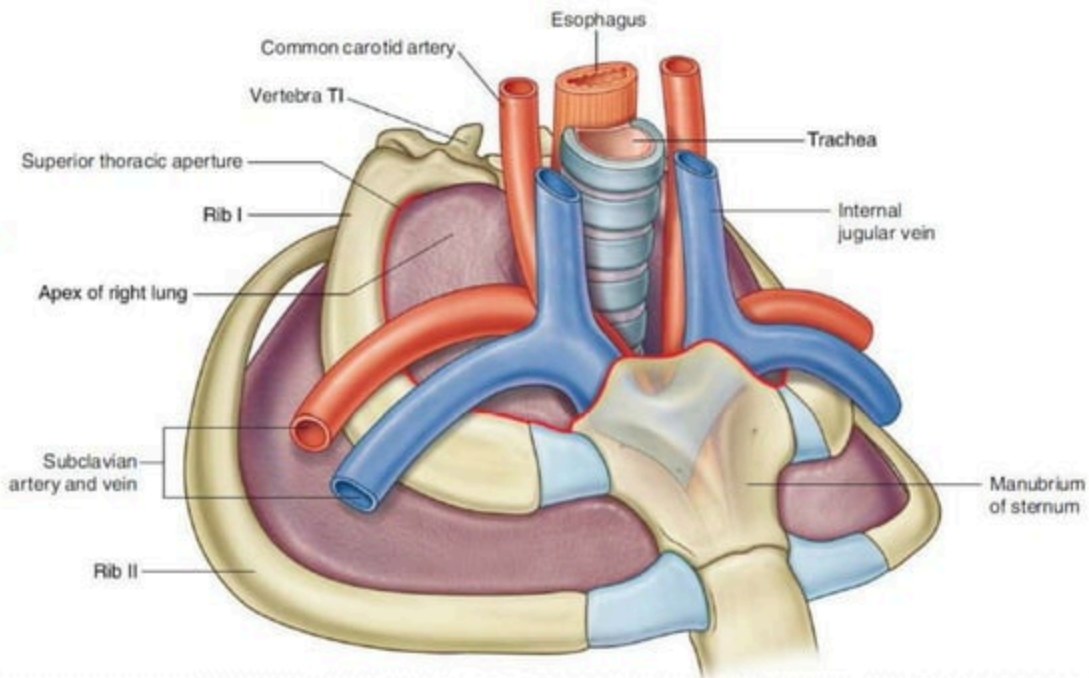

Thorax

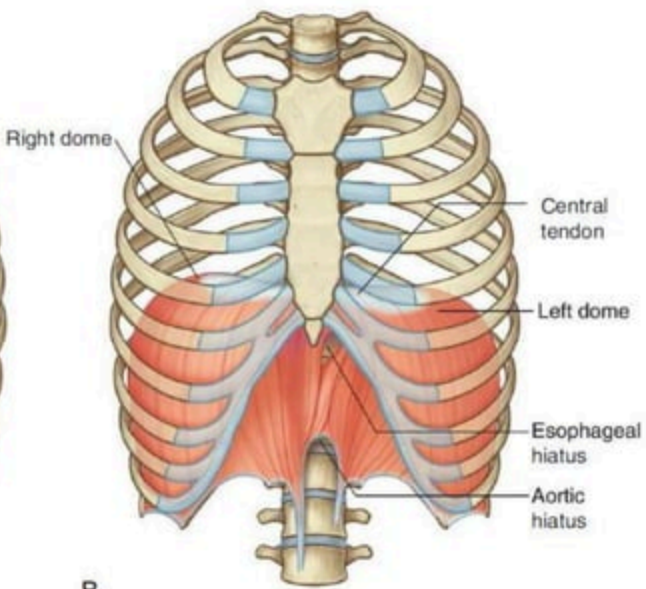
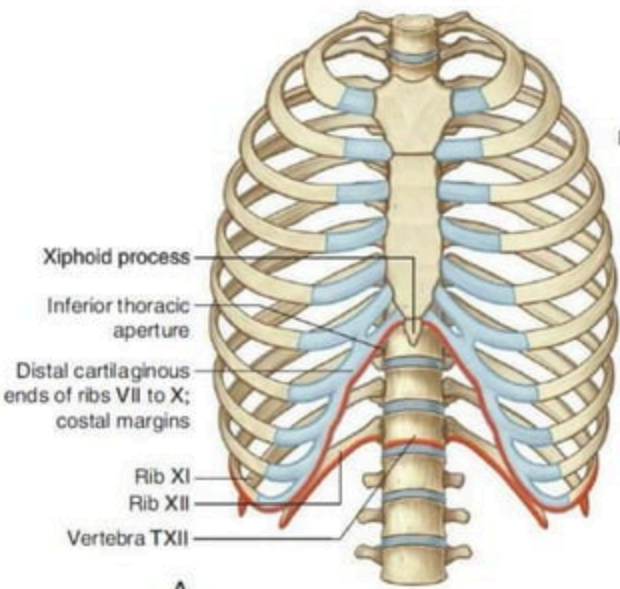
Prepared : CHY YONG

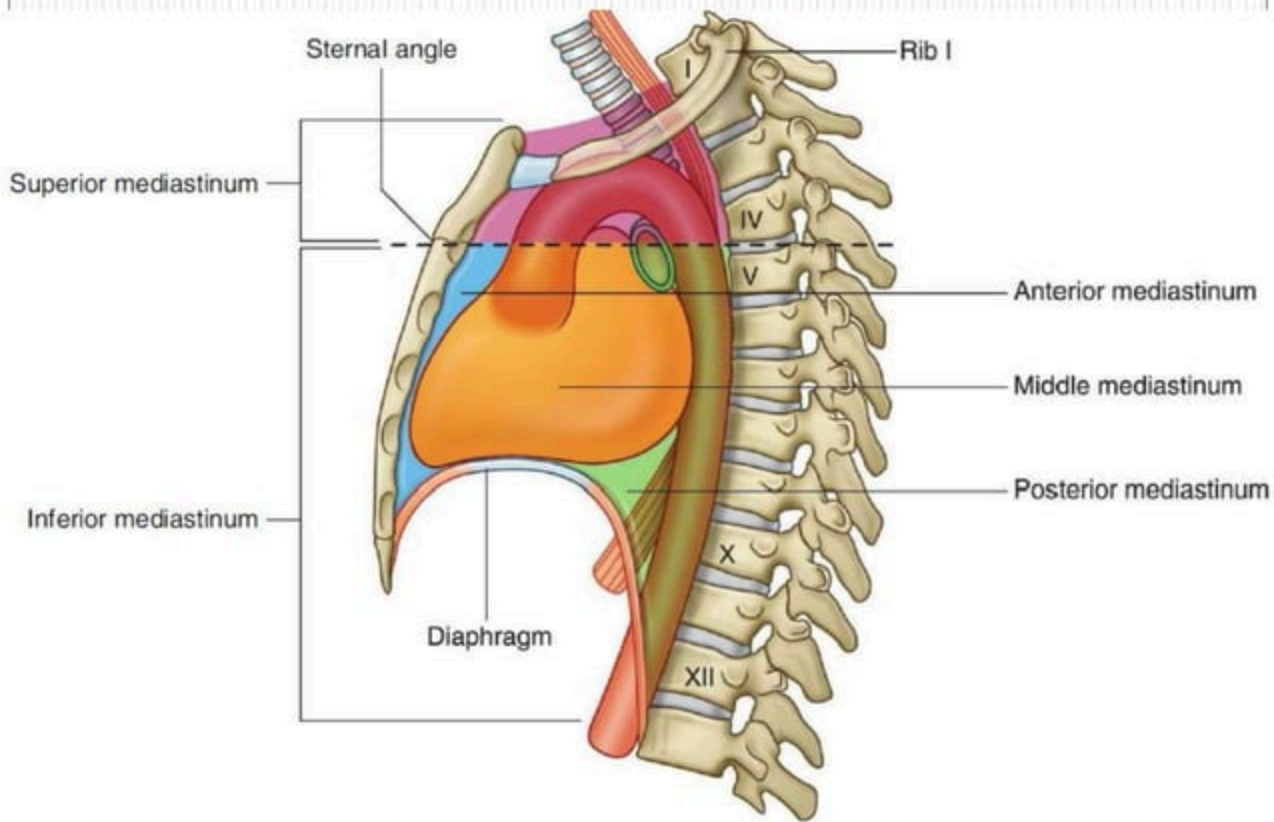
** Human Anatomy Slides**

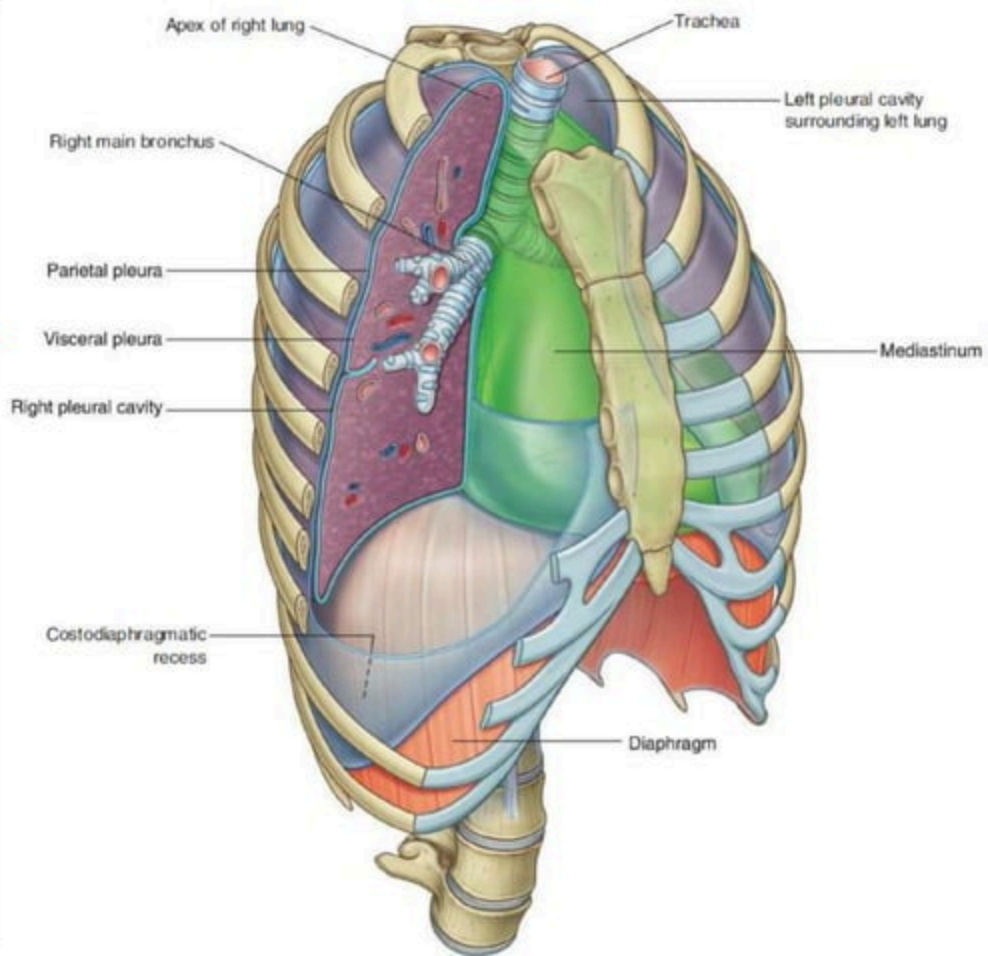


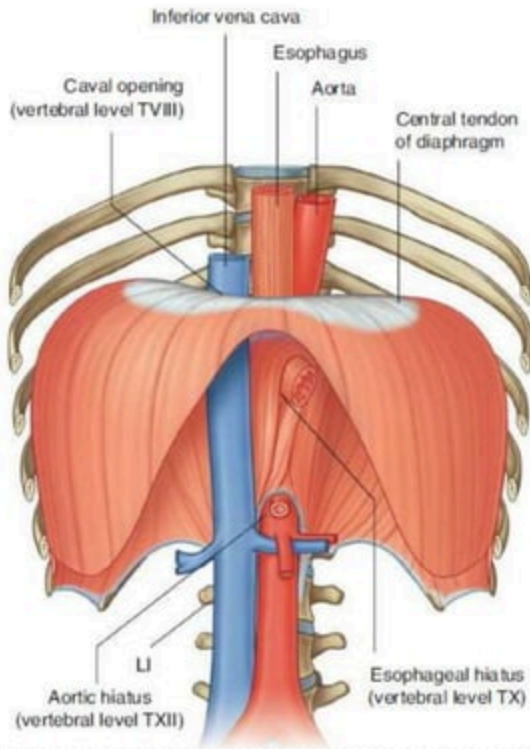
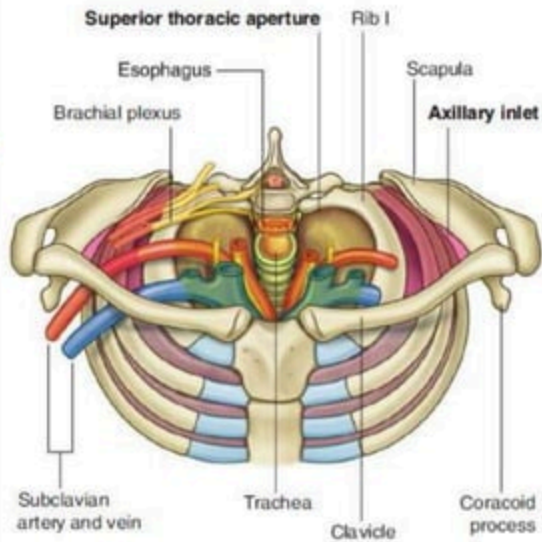


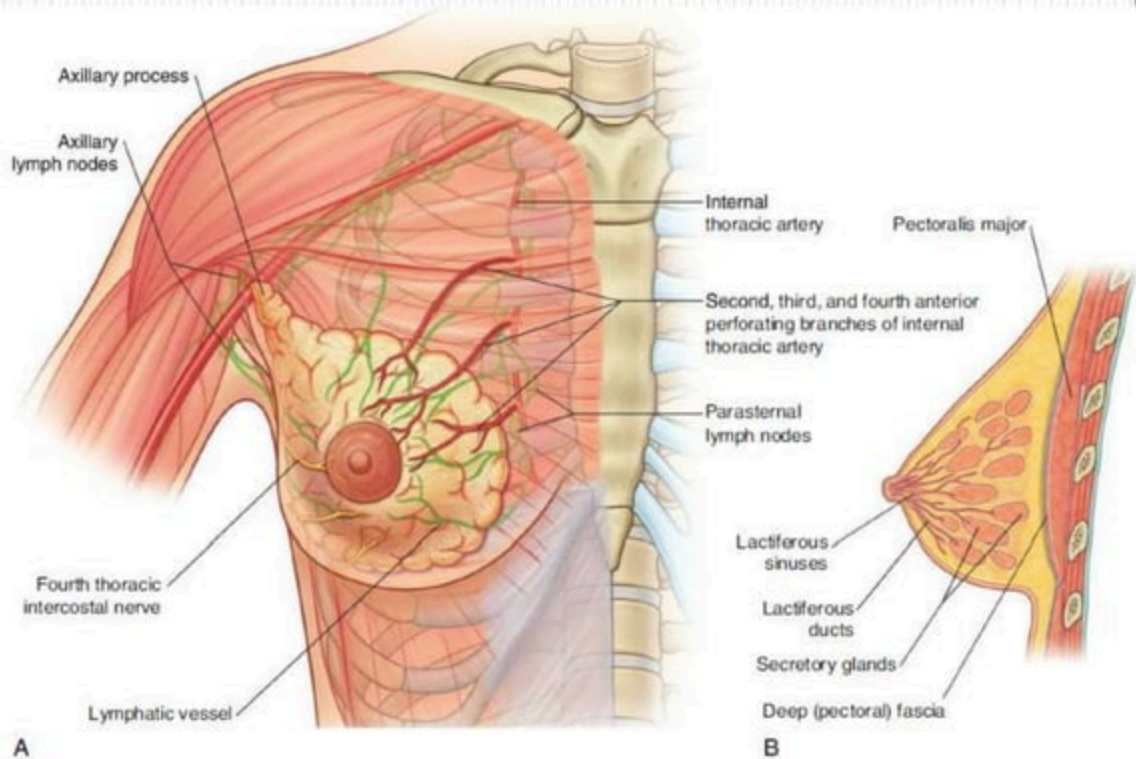


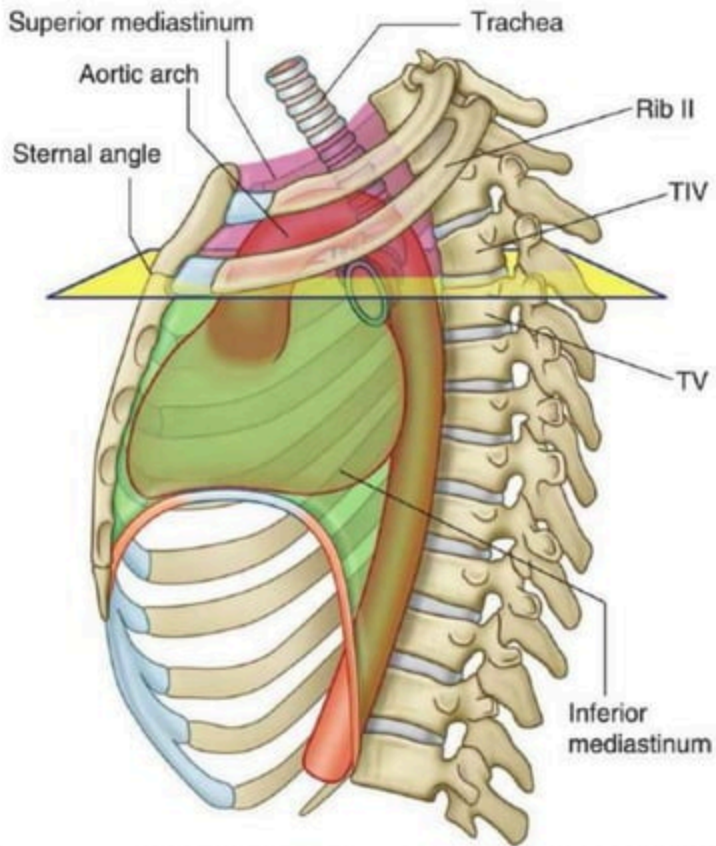


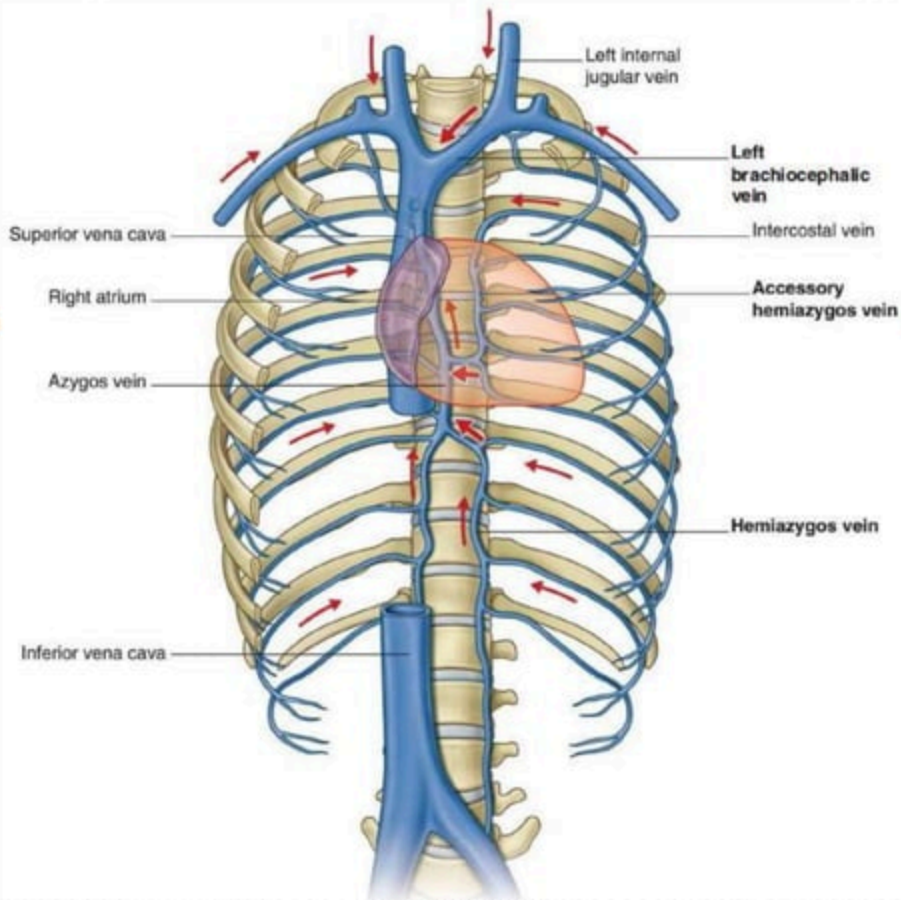


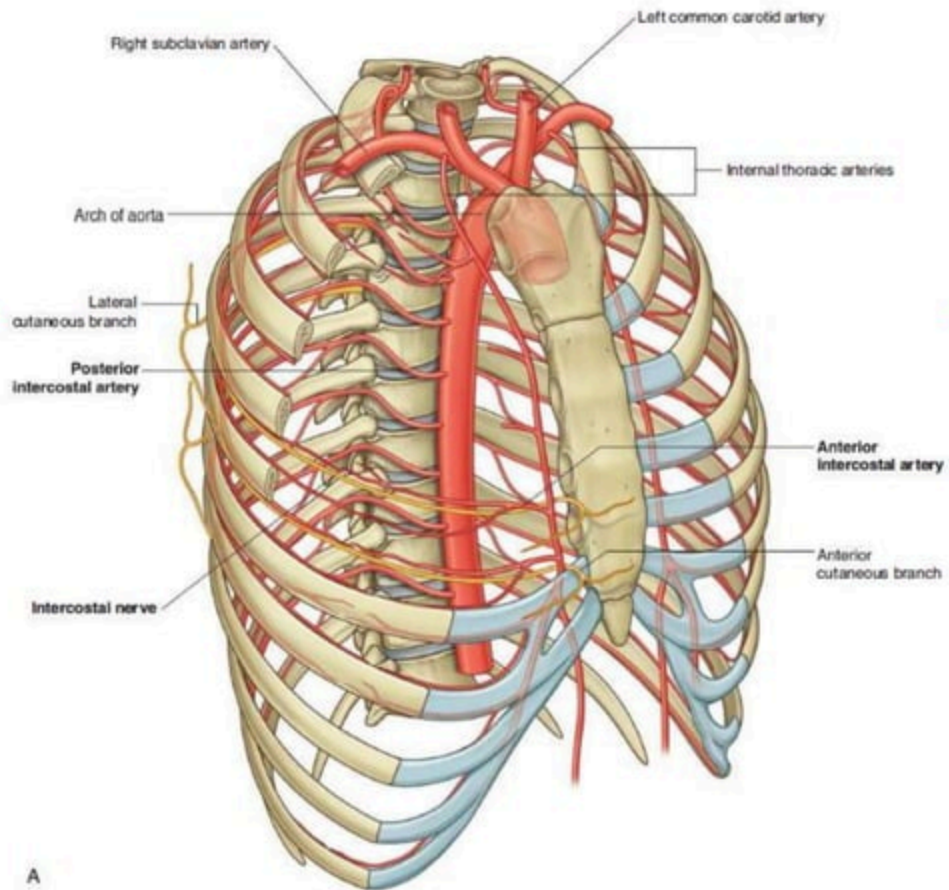


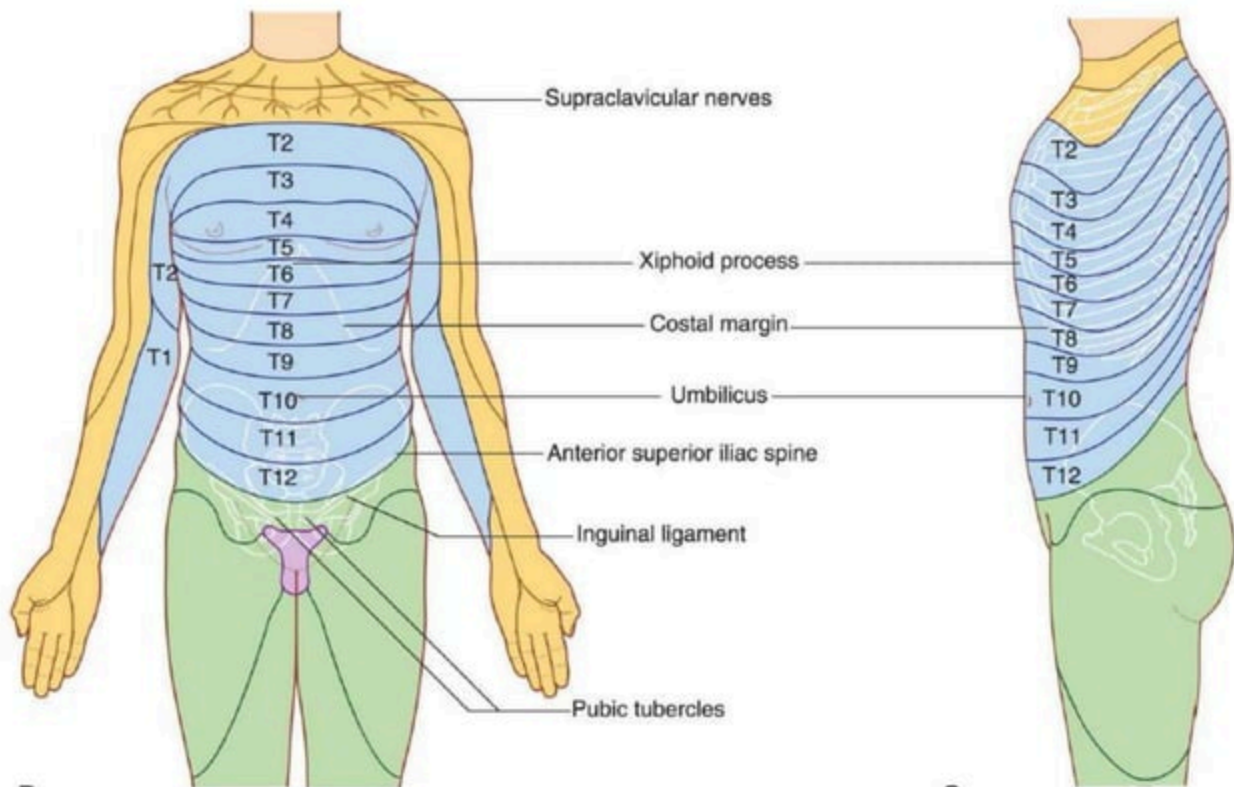






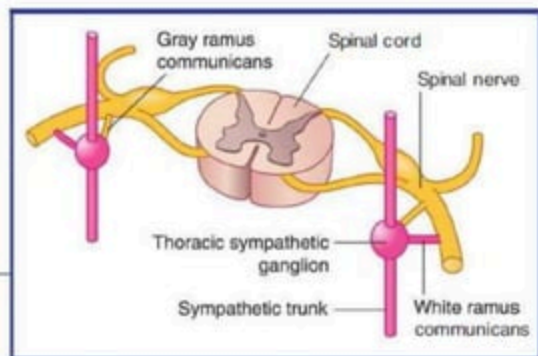
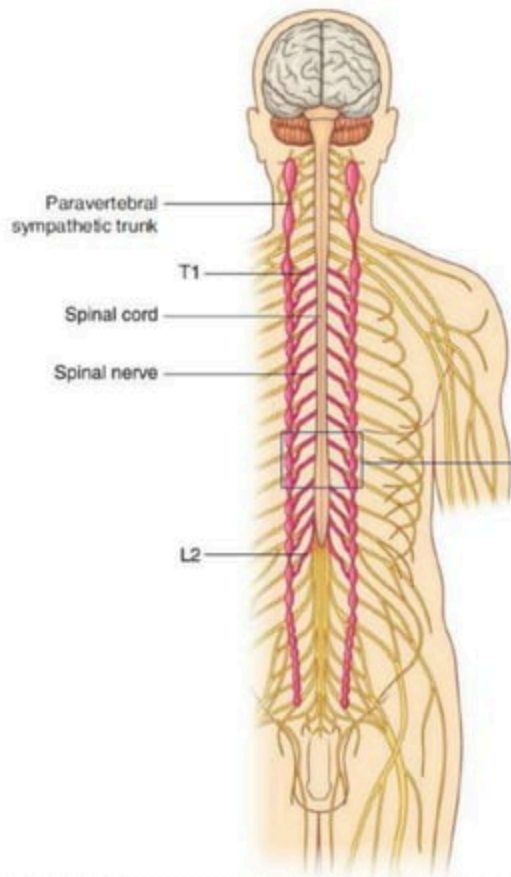






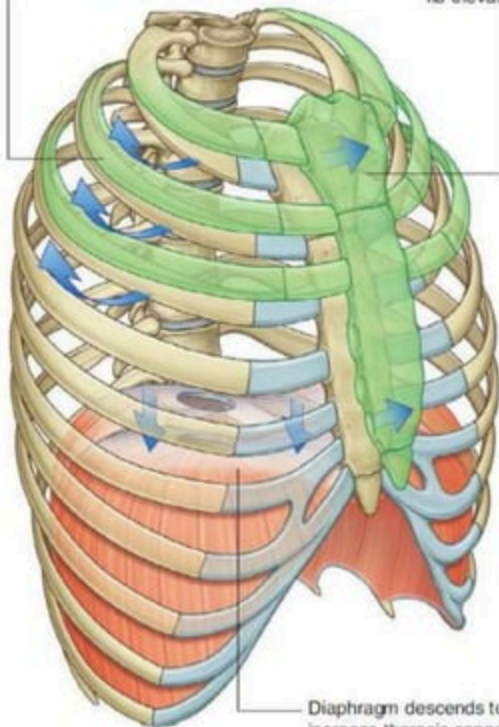
B

C

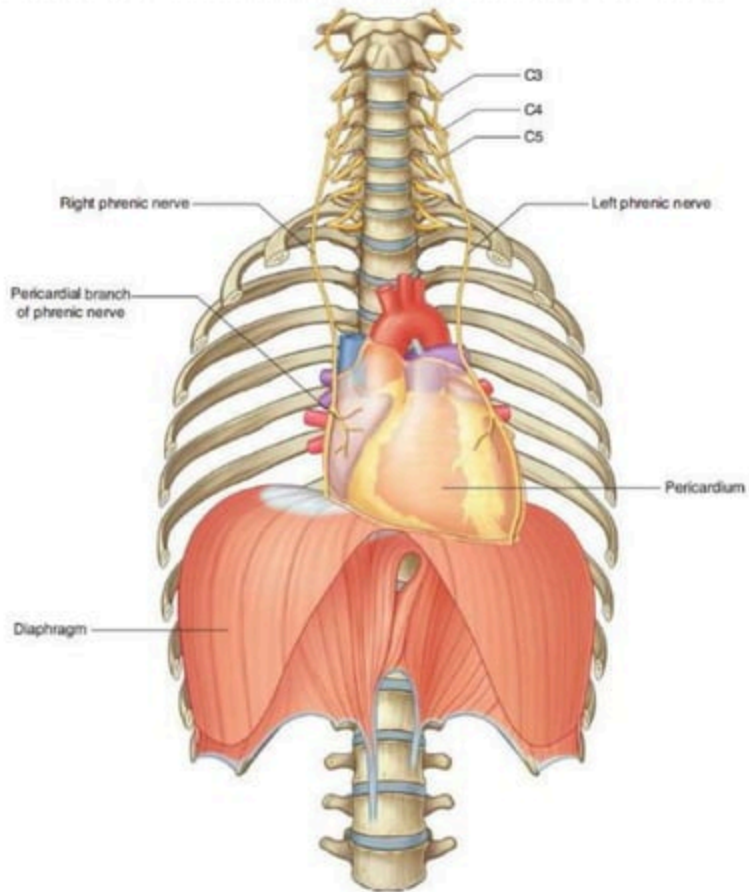


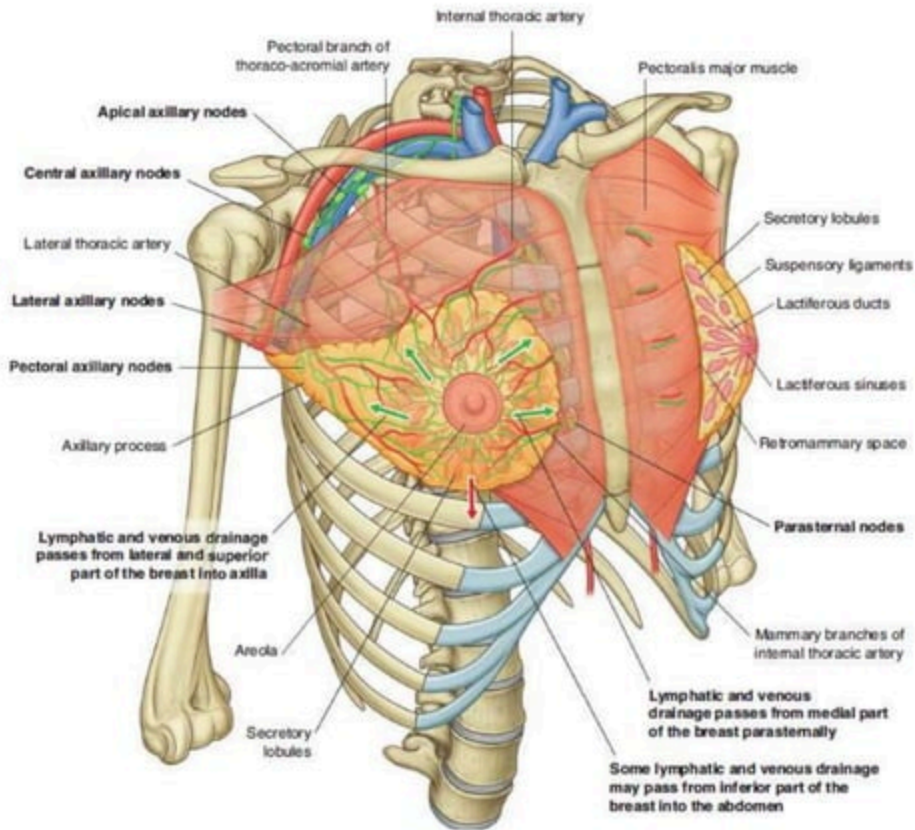
Elevation of lateral aspect
of ribs in inspiration

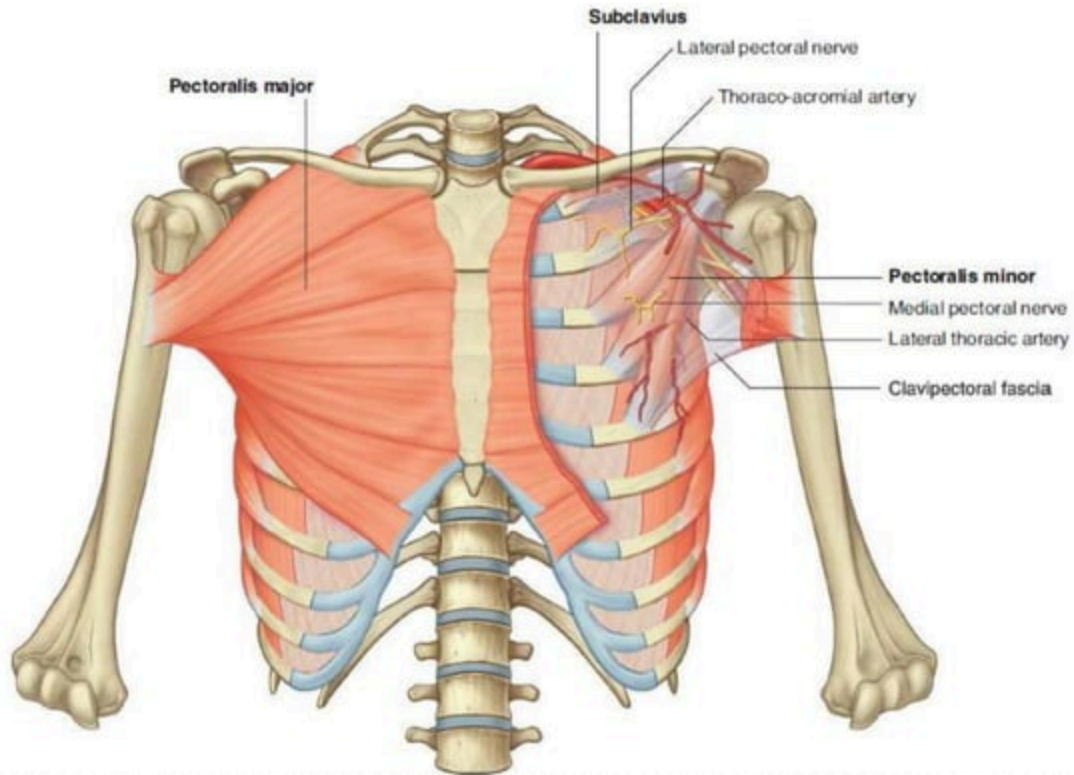
Sternum moves forward
in inspiration because of
rib elevation

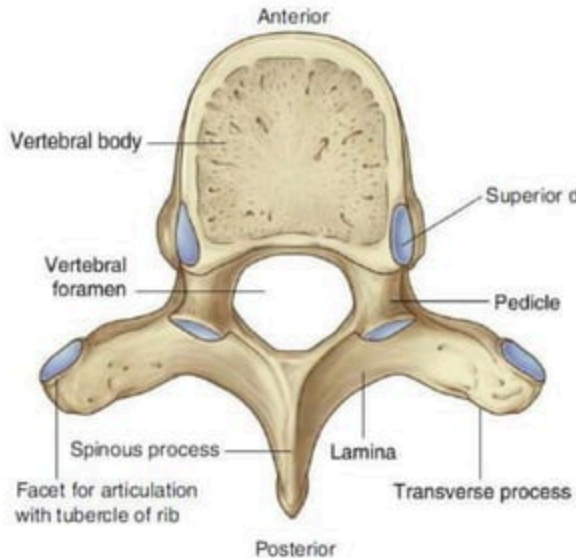


Diaphragm descends to
increase thoracic capacity
in inspiration

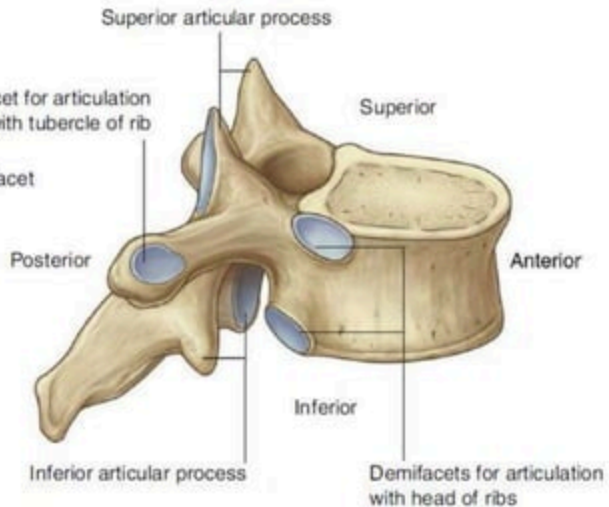






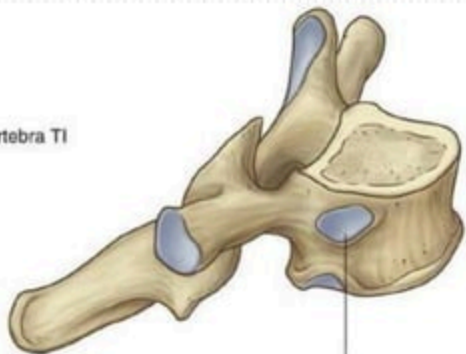


Superior view



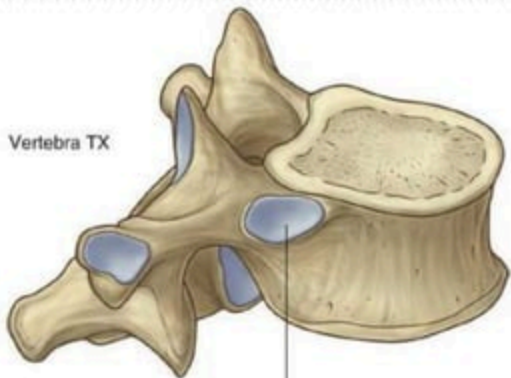
Superolateral view

Vertebra T1



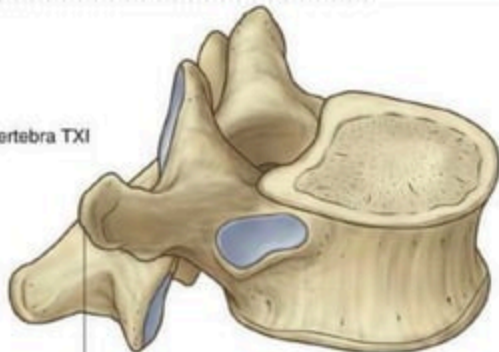
Superior costal facet for head of rib I

Vertebra TX

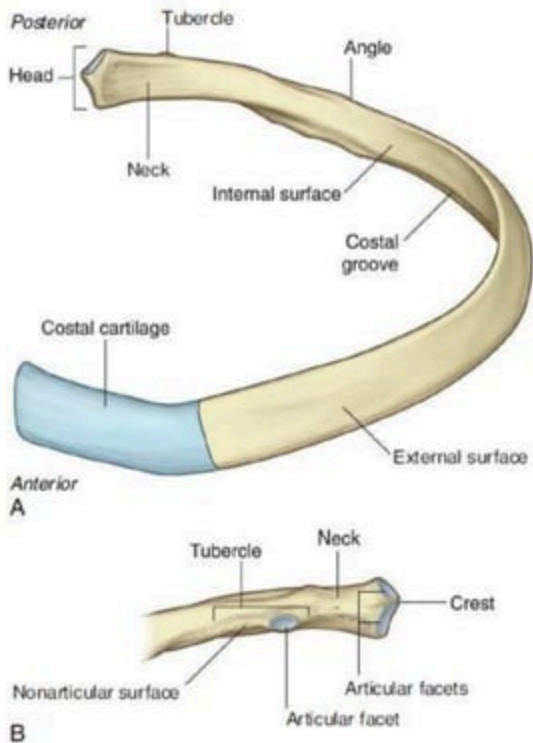
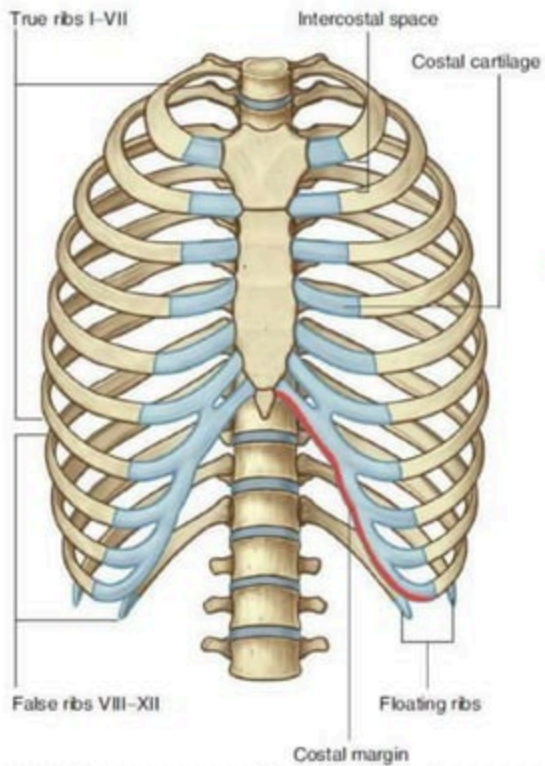


Single complete costal facet for head of rib X

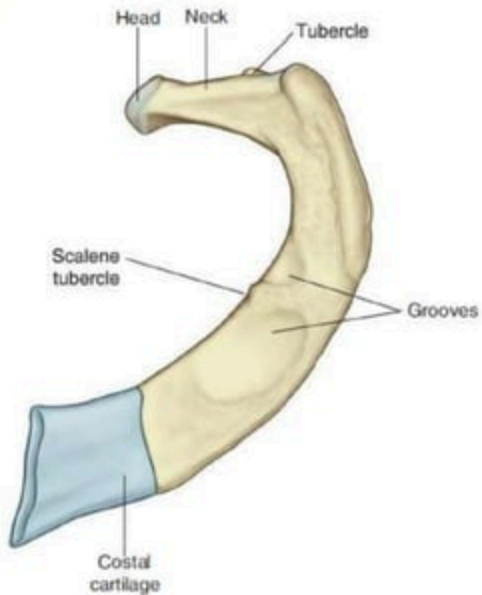
Vertebra TXI



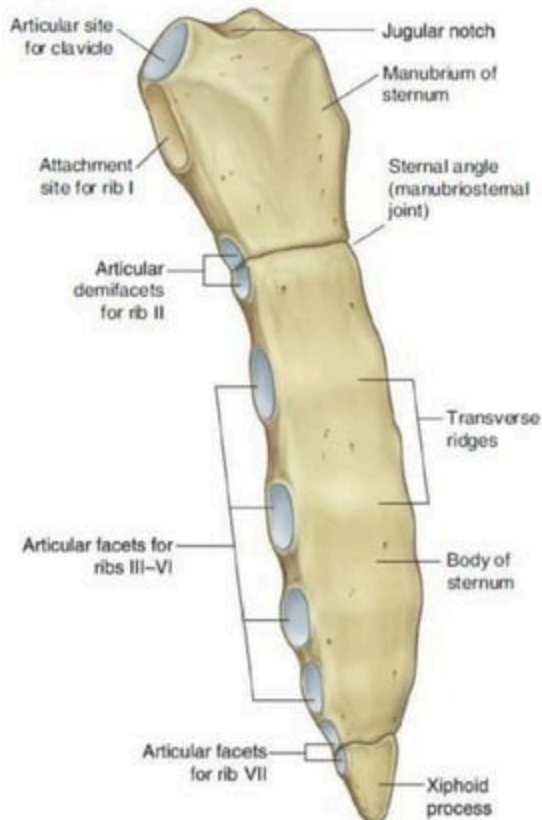
No costal facet on transverse process

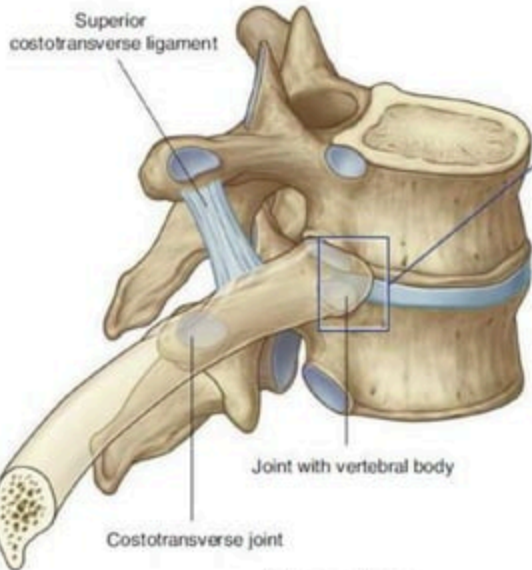


Rib I

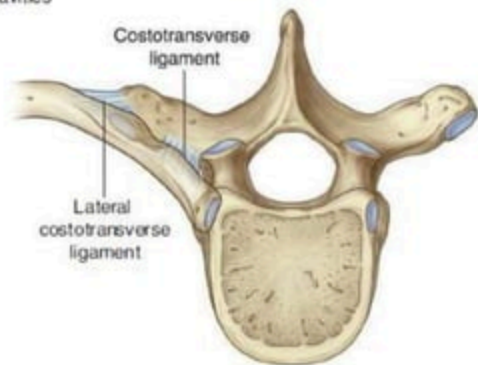
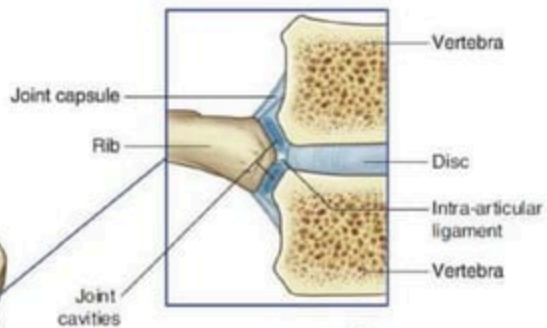


Rib XII

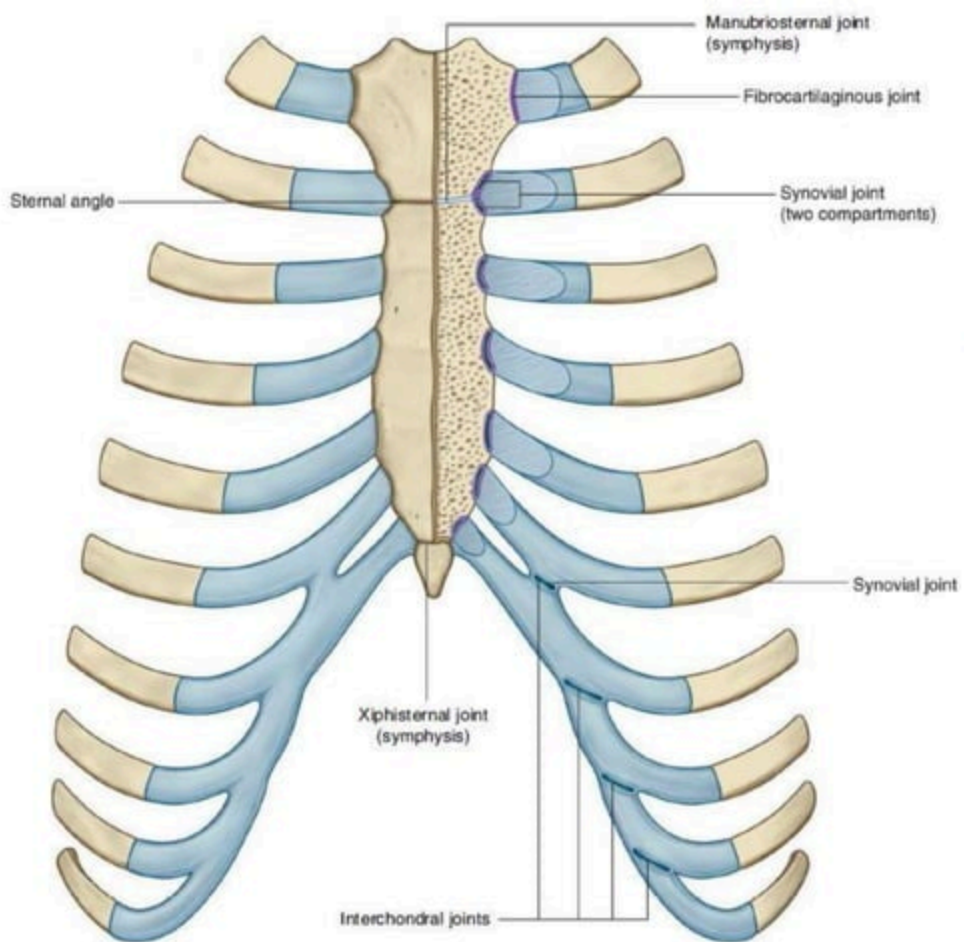


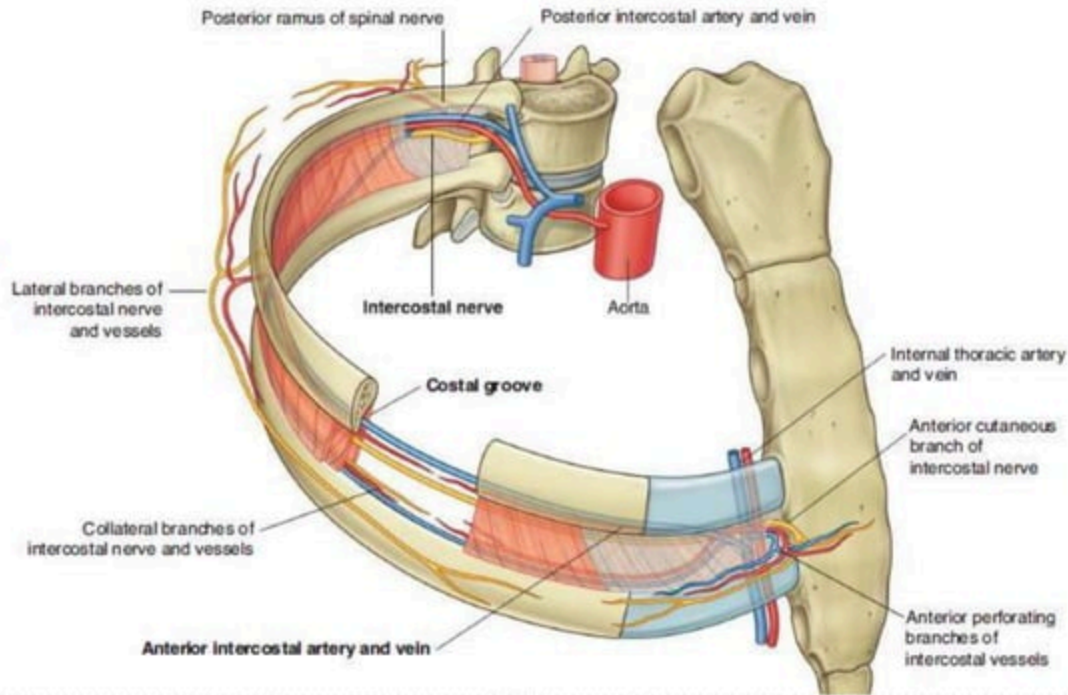


Superolateral view

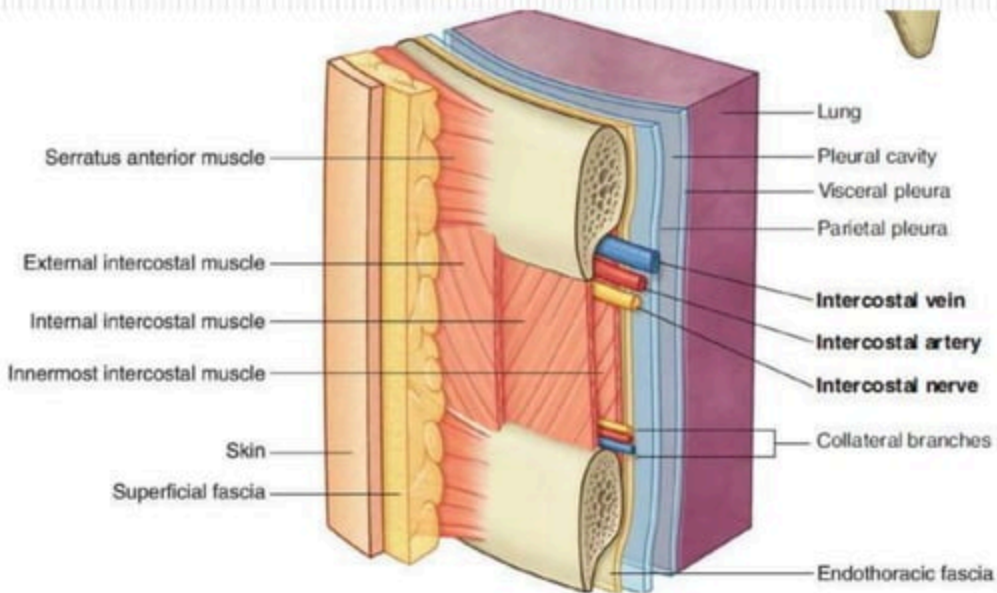


Superior view

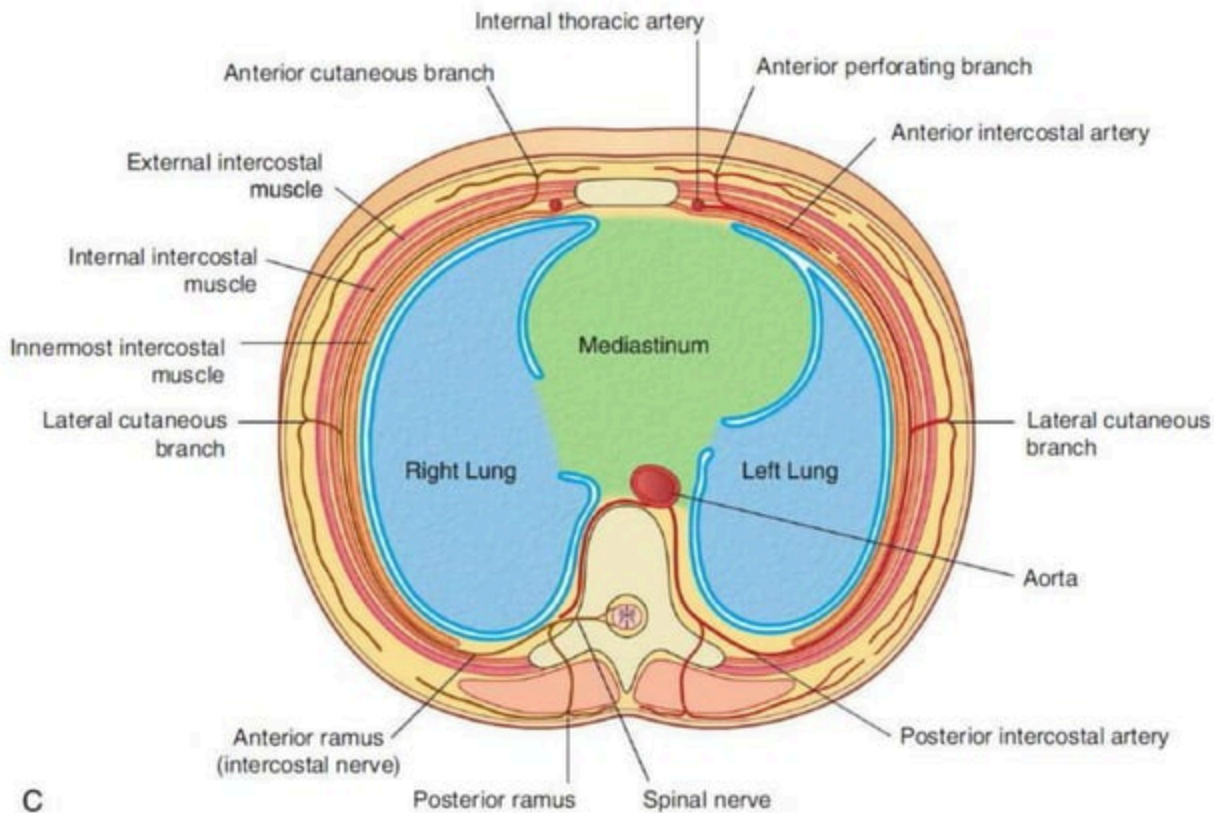




A



B



C

External intercostal muscle Intercostal nerve

Intercostal artery

Intercostal vein

Internal intercostal muscle

Innermost intercostal muscle

Collateral branches

External intercostal membrane

External intercostal muscle

