

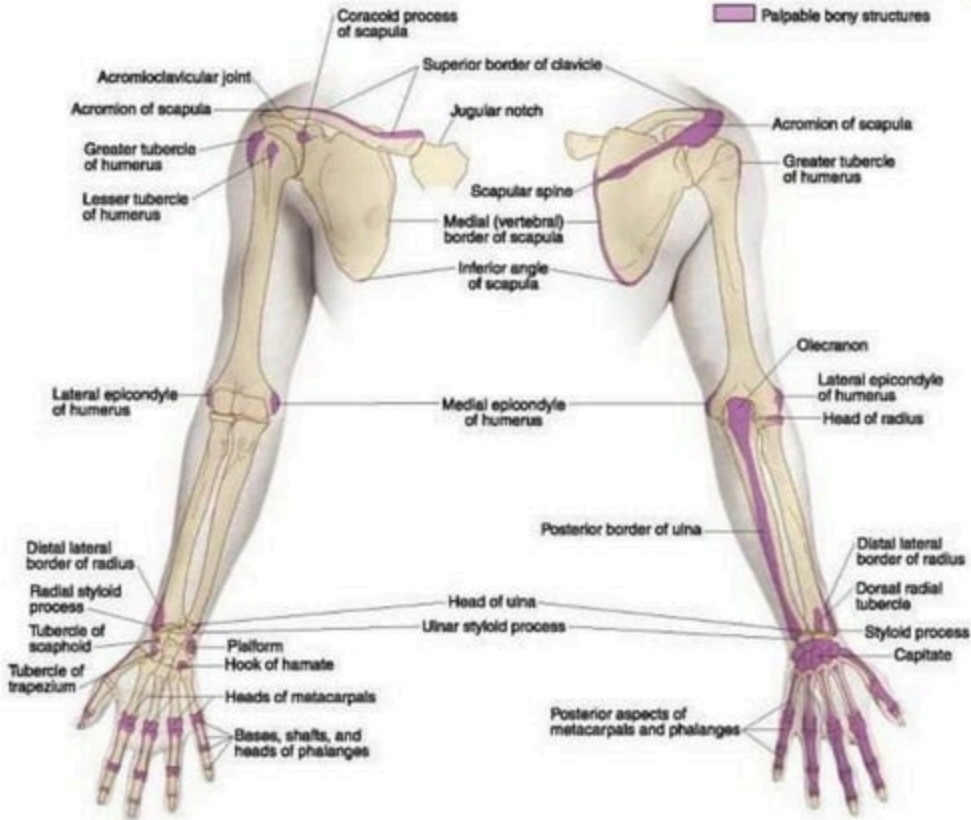
# Upper Limb

Prepared : CHY YONG

\*\* Human Anatomy Slides\*\*

### A. Anterior view

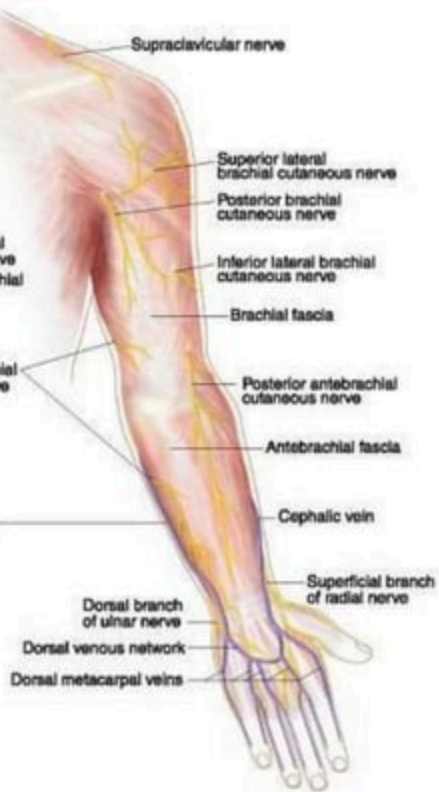
### B. Posterior view



### A. Anterior view



### B. Posterior view

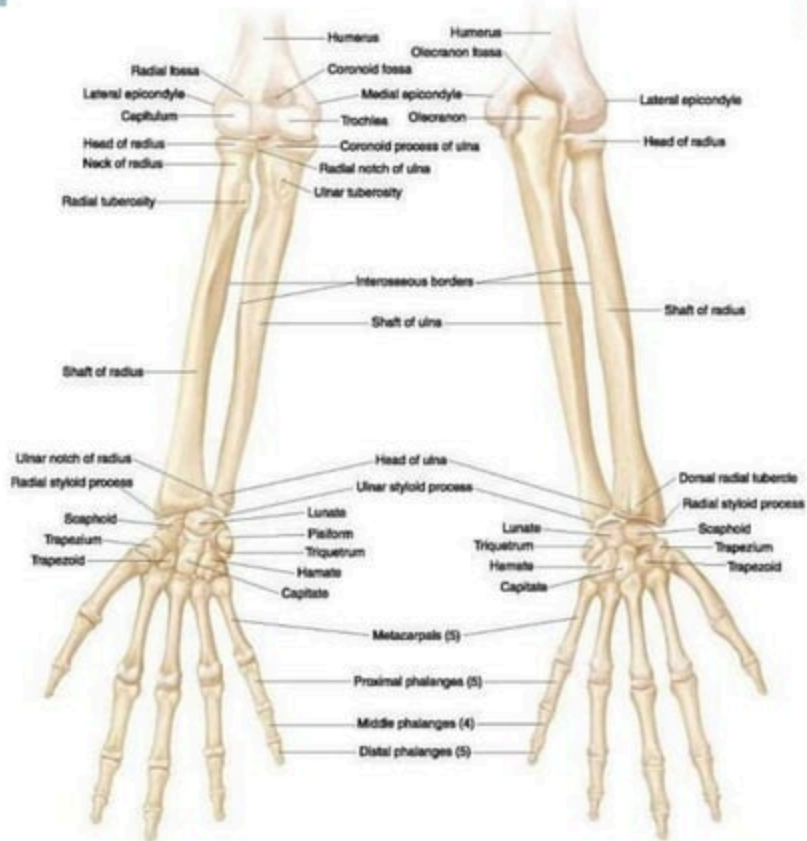


## A. Anterior view



## B. Posterior view



**A. Anterior view****B. Posterior view**

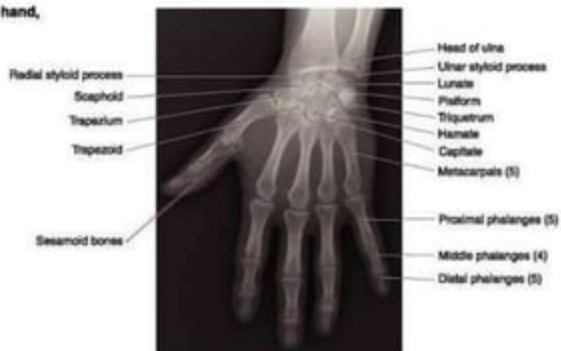
### A. Right shoulder, anterior view



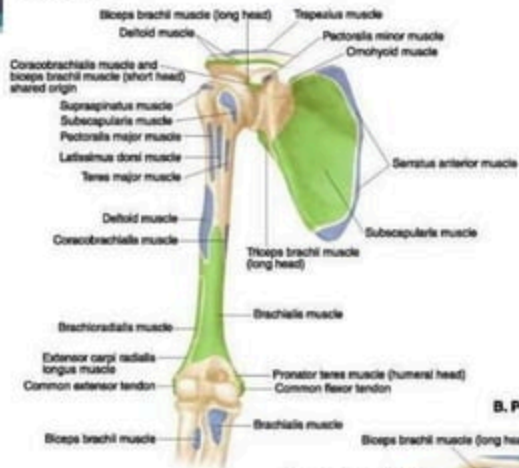
### B. Right elbow, anterior view



### C. Right wrist and hand, anterior view



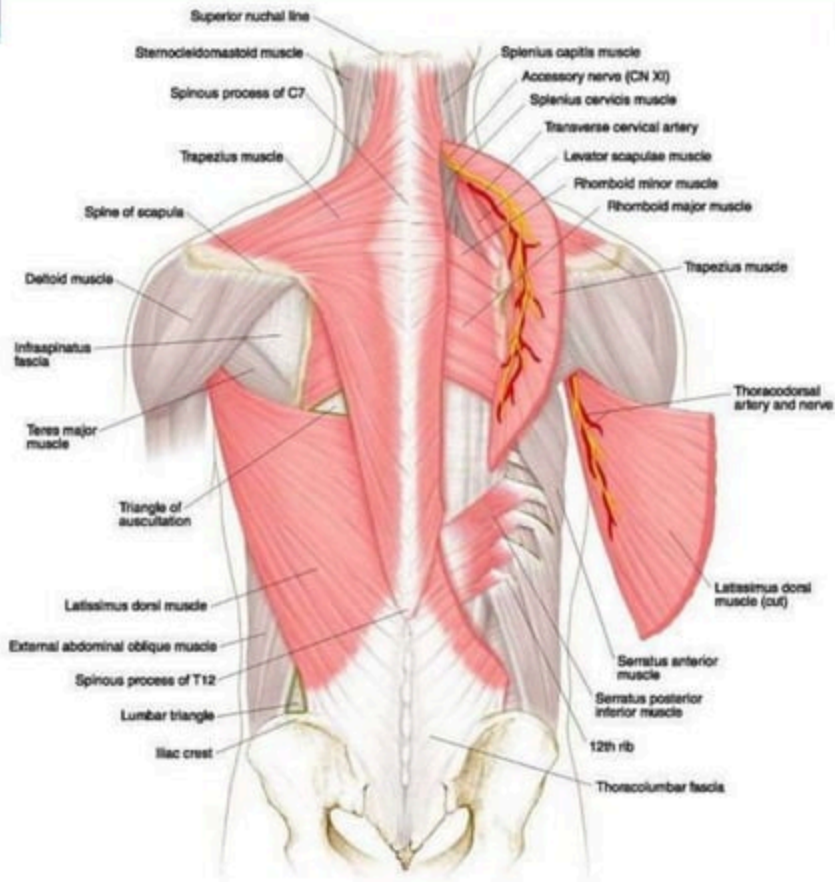
### A. Anterior view



### B. Posterior view

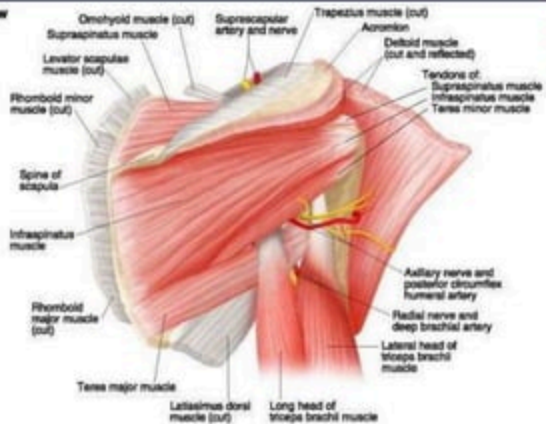


\*Small slip of origin in 53% of cases

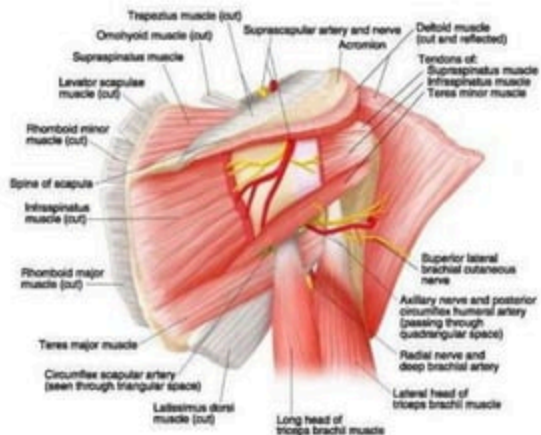




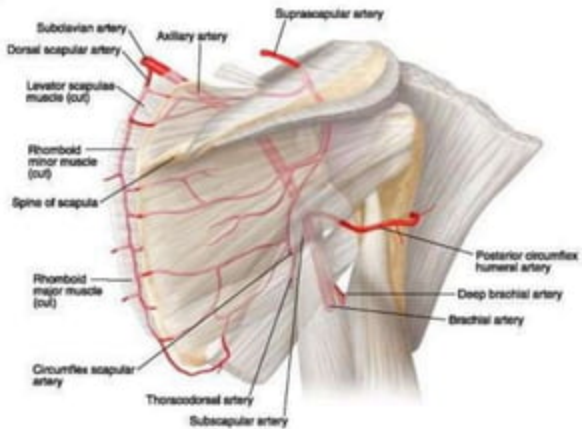
### A. Superficial view



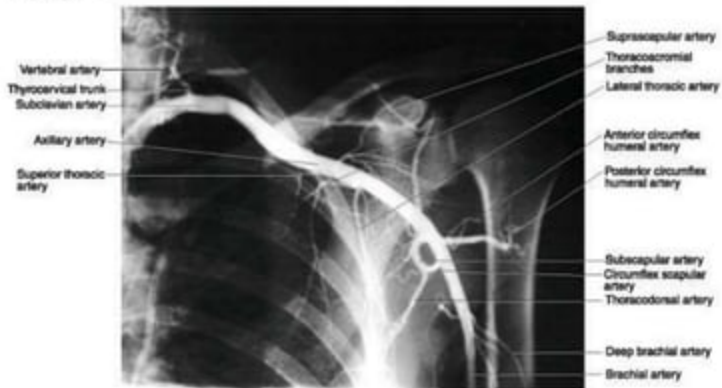
### B. Deep view



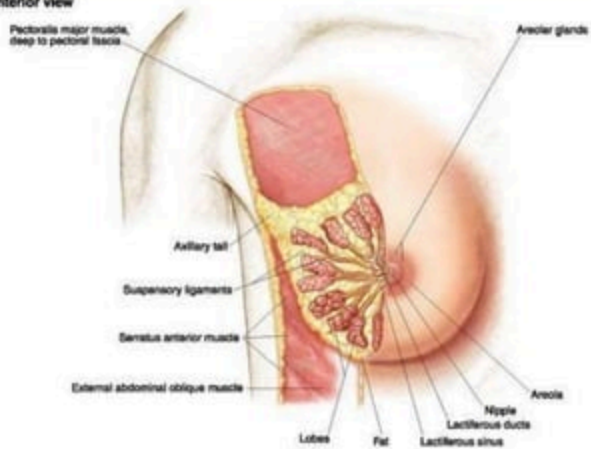
## A. Arteries



## B. Angiogram



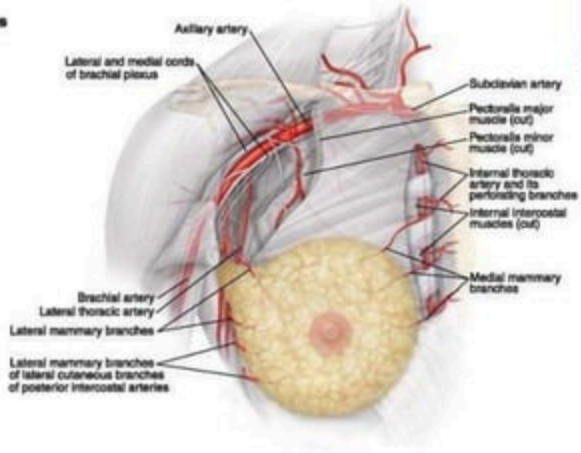
### A. Anterior view



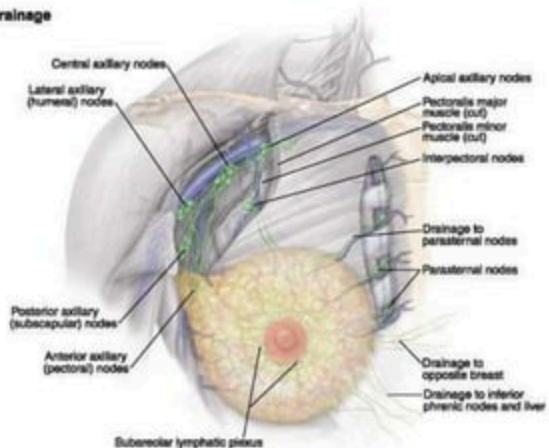
### B. Sagittal section



## A. Arteries



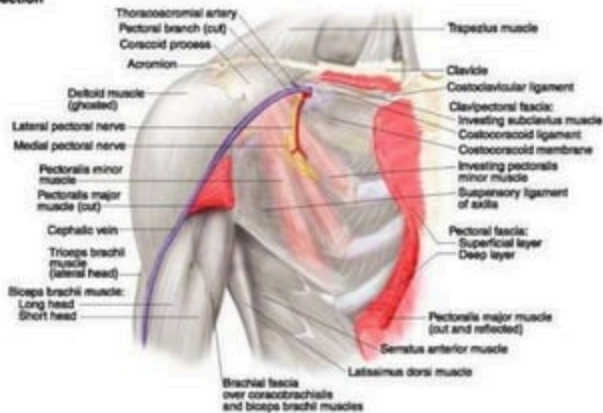
## B. Lymphatic drainage

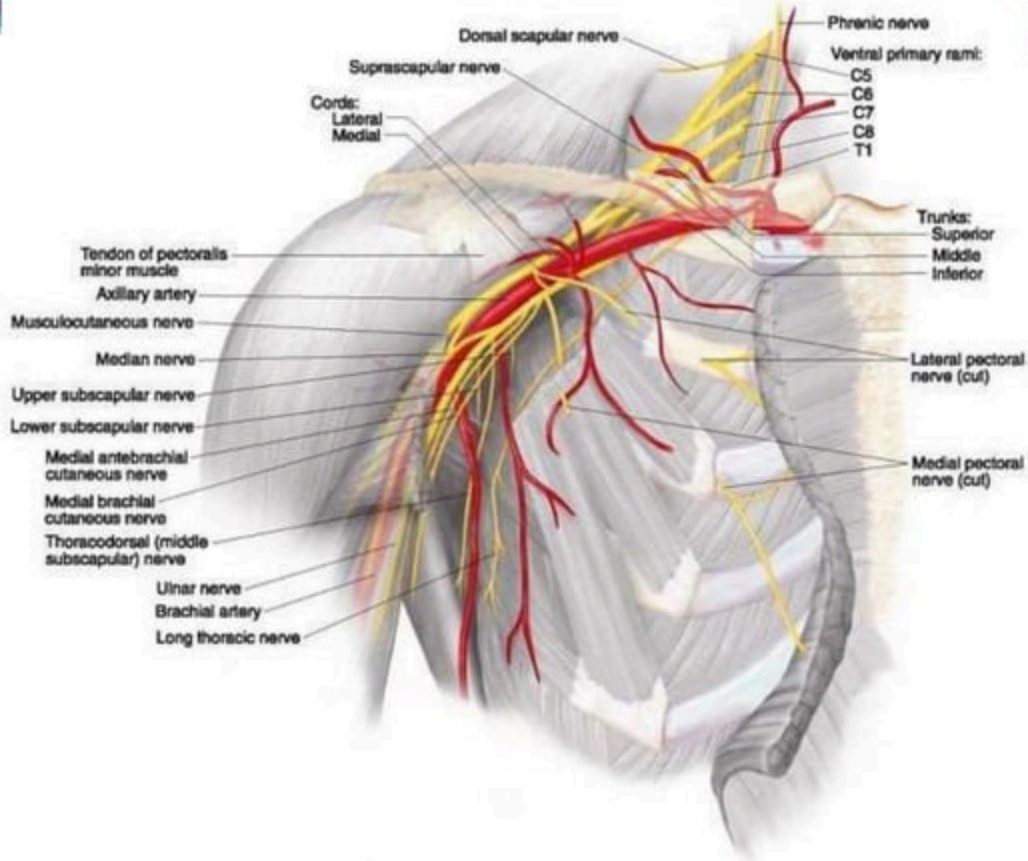


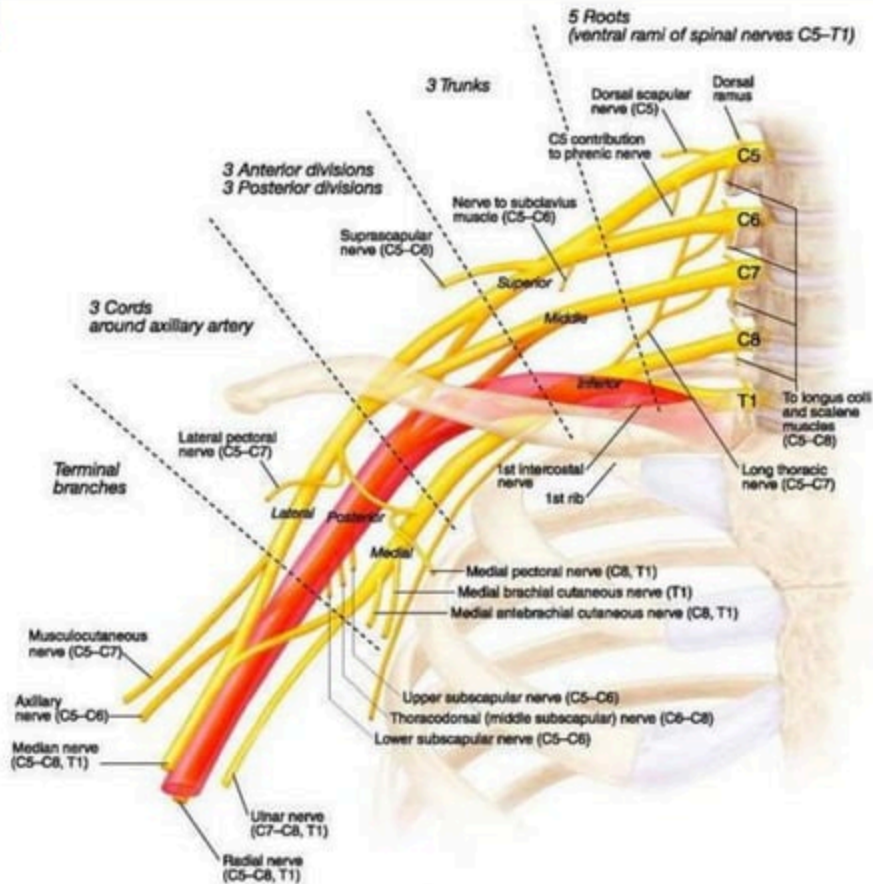
## A. Superficial dissection



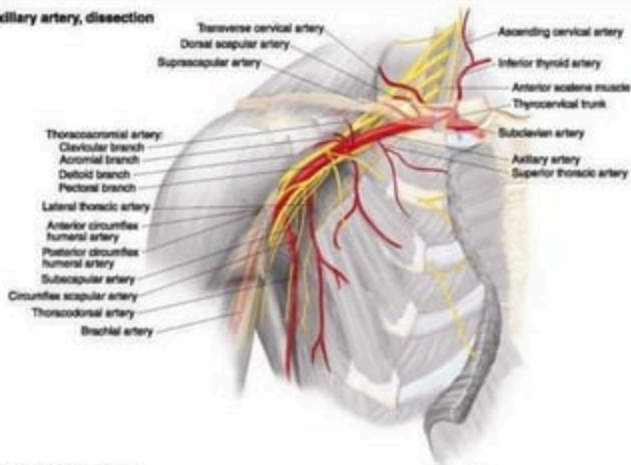
## B. Deep dissection





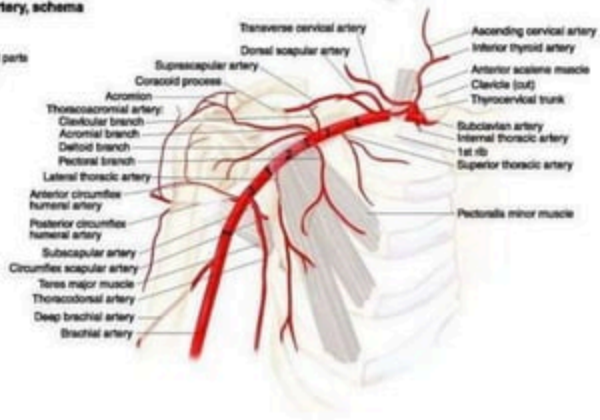


### A. Axillary artery, dissection



### B. Axillary artery, schema

1, 2, 3 indicate 1st, 2nd, and 3rd parts of axillary artery





**A. Posterior view**



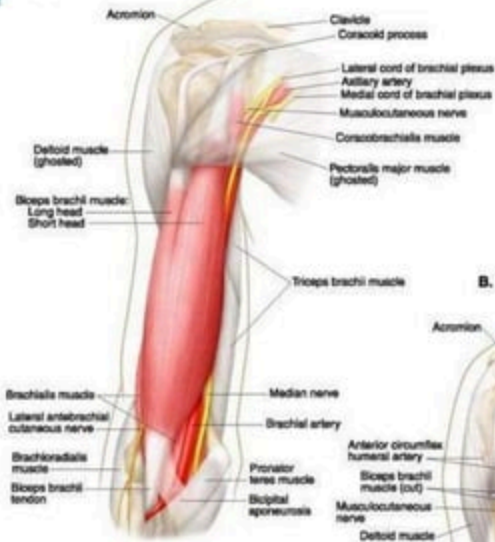
**B. Anterior view**



**C. Superolateral view**



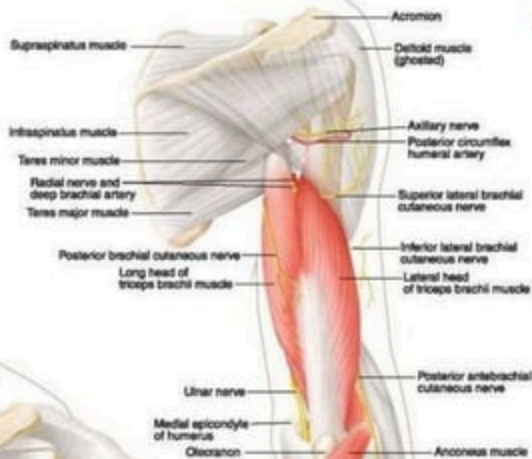
### A. Superficial view



### B. Deep view



### A. Superficial view



### B. Deep view

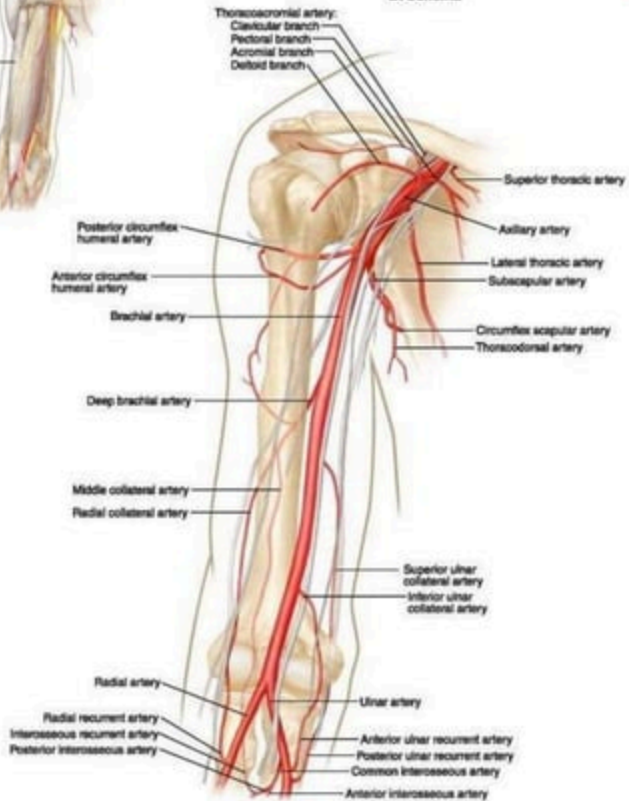


### A. Orientation

Biceps brachii muscle (ghosted)



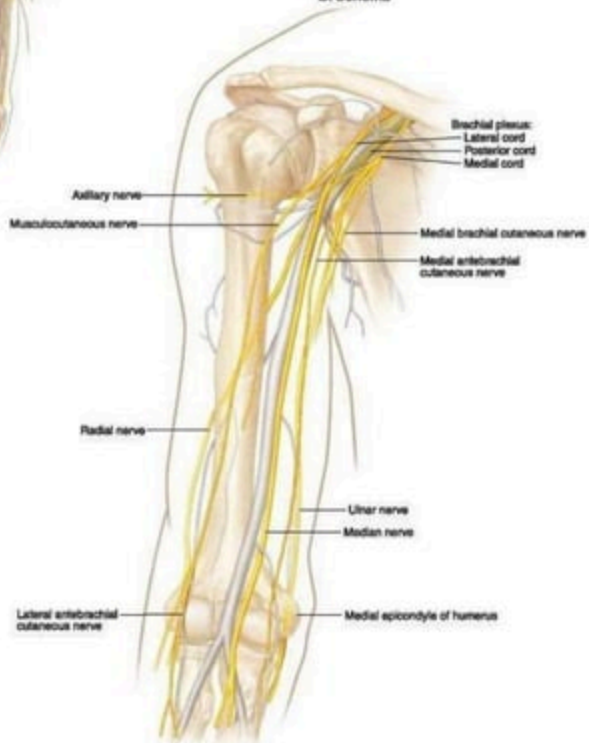
### B. Schema

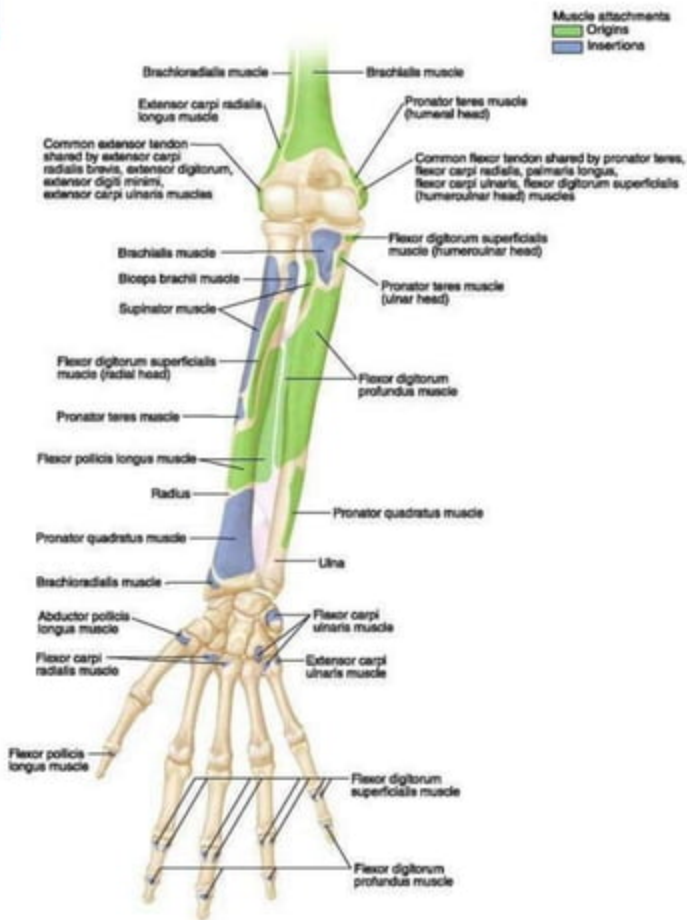


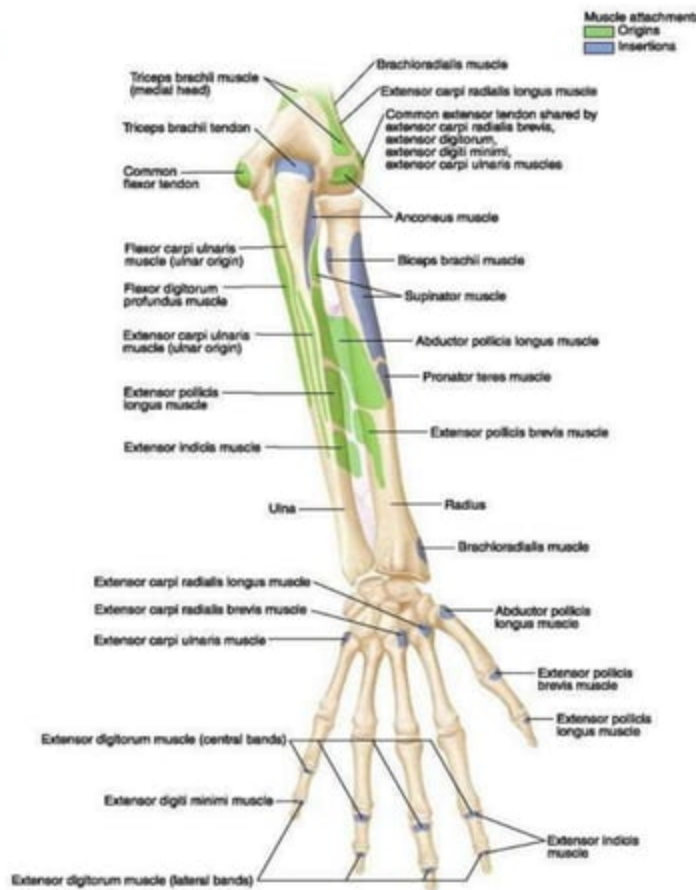
## A. Orientation

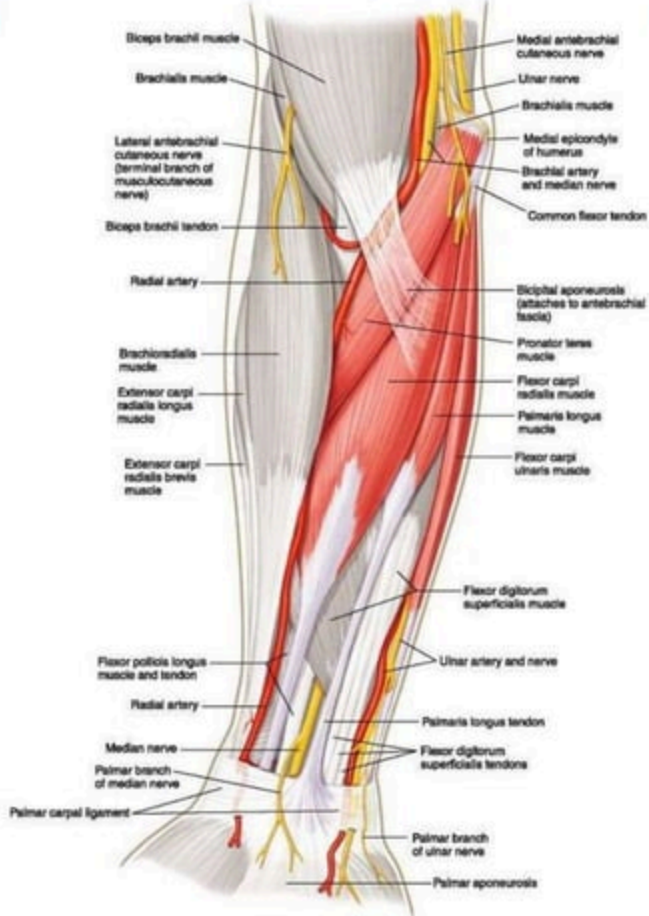


## B. Schema

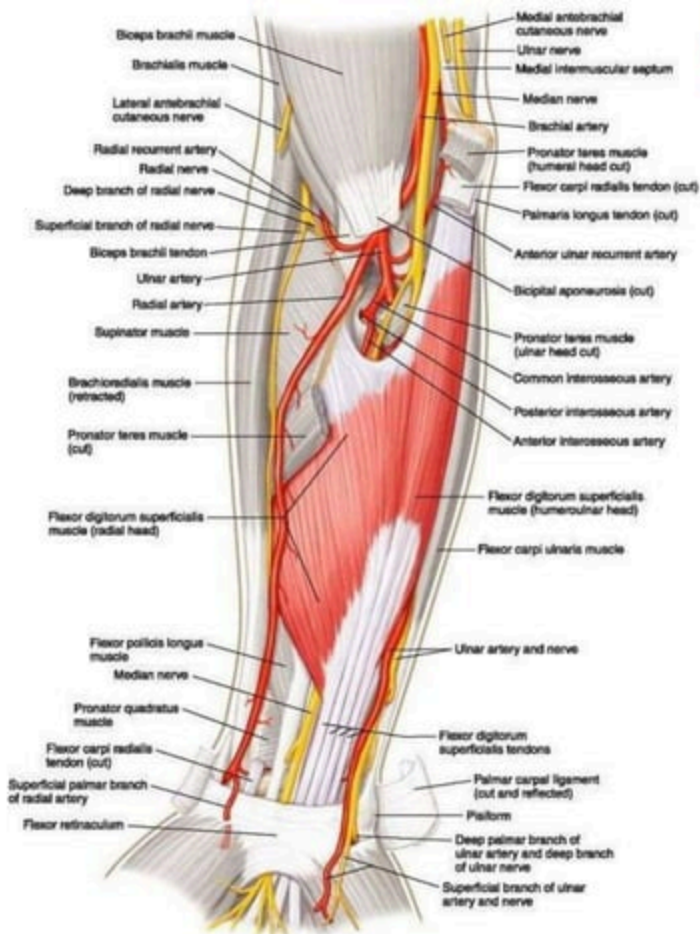


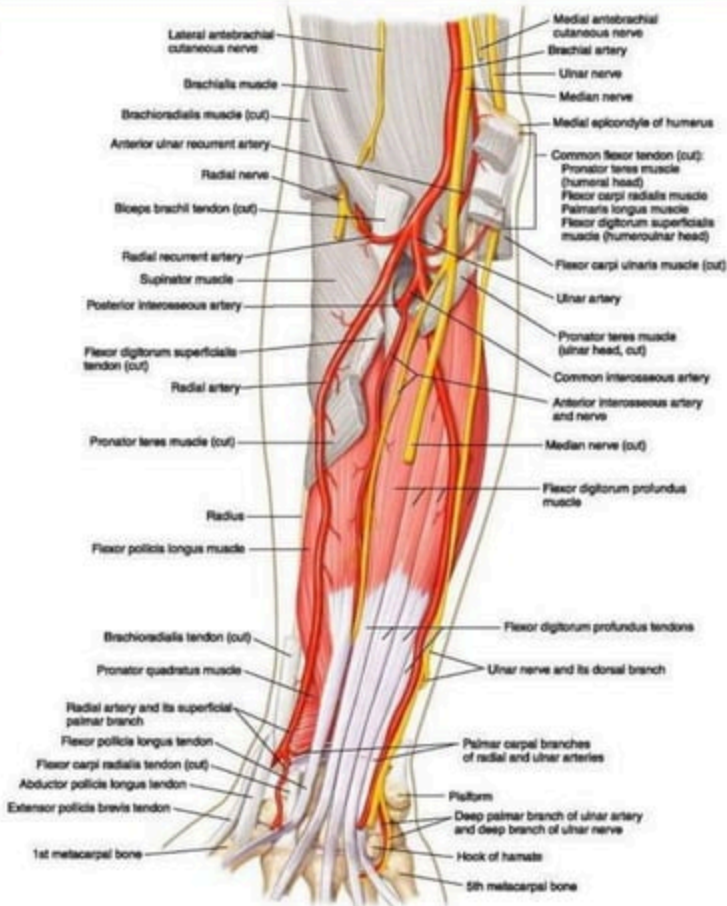




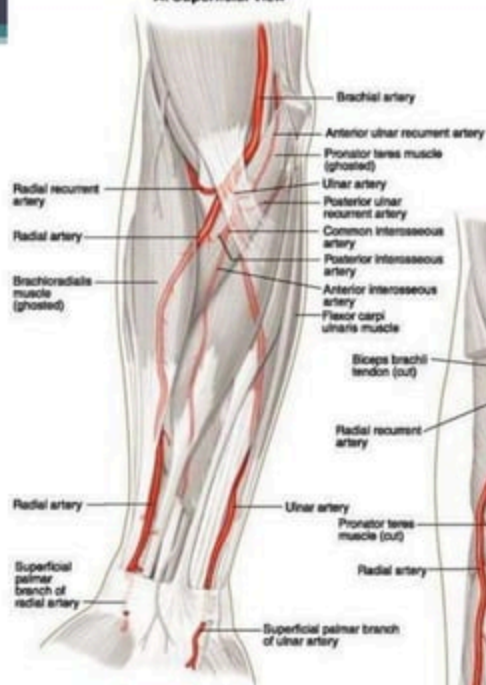




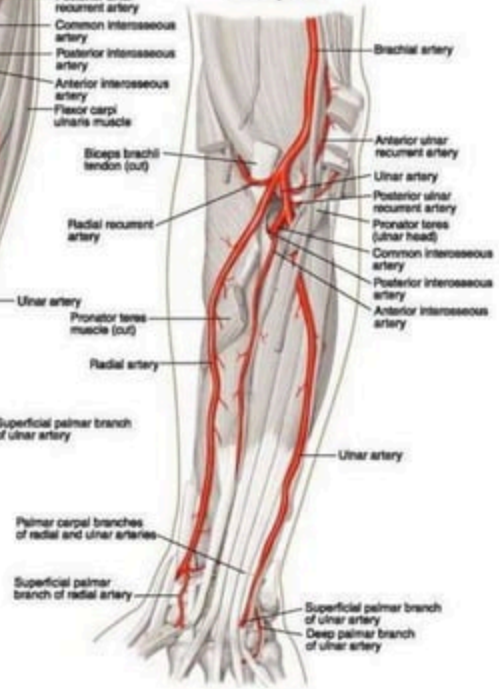




### A. Superficial view



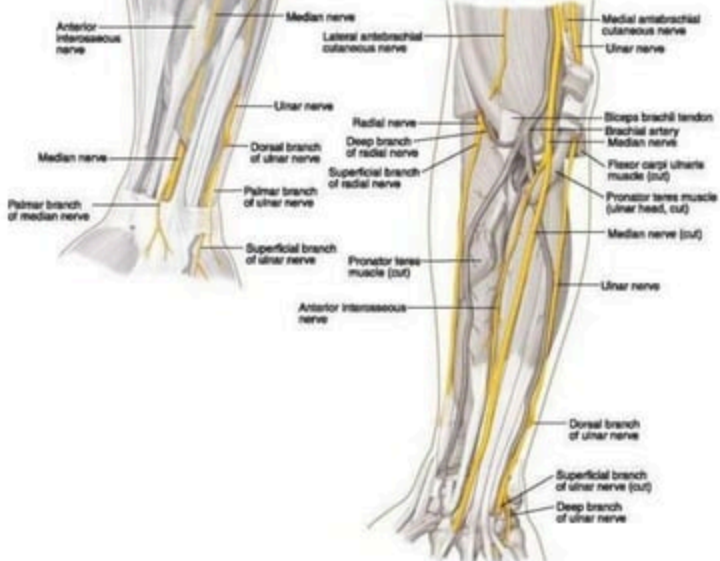
### B. Deep view



### A. Superficial view



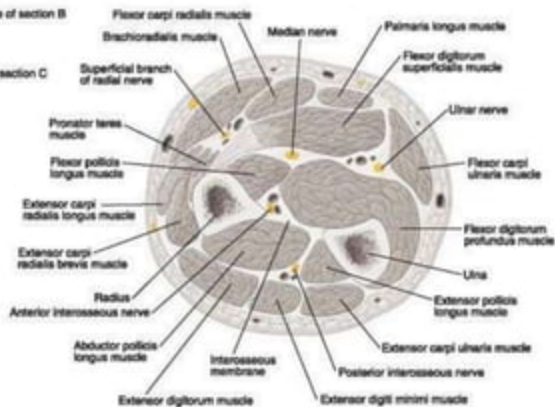
### B. Deep view



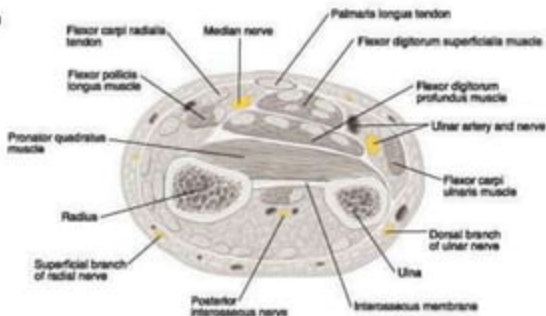
### A. Orientation

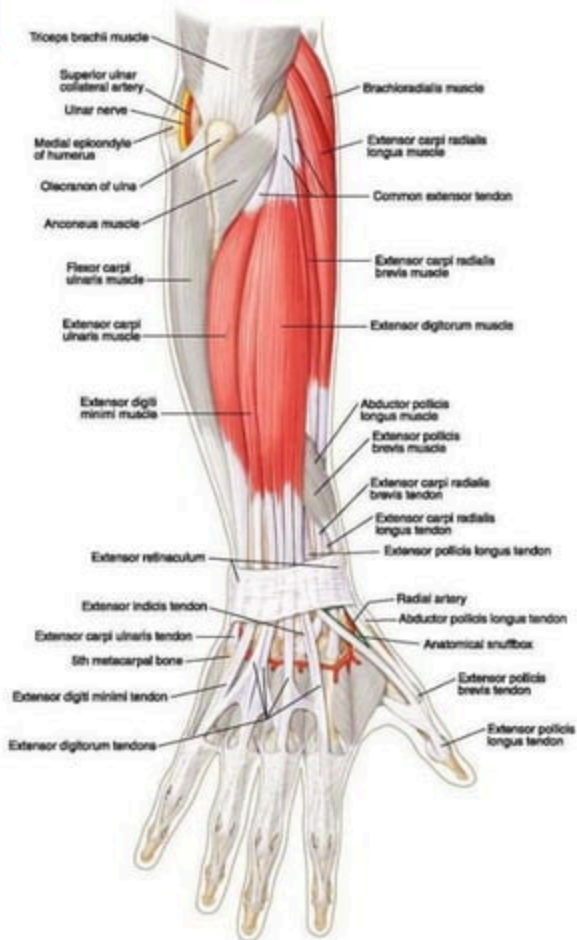


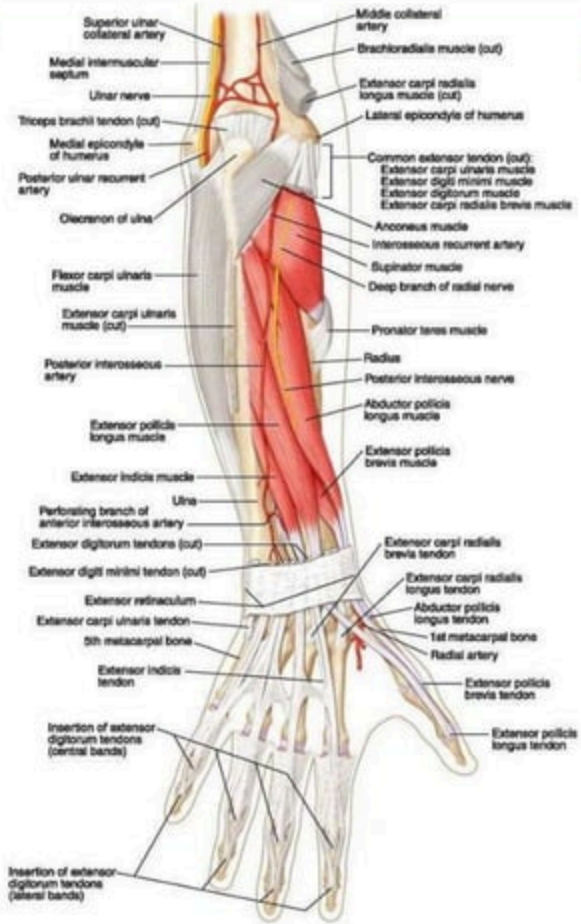
### B. Midforearm



### C. Distal forearm



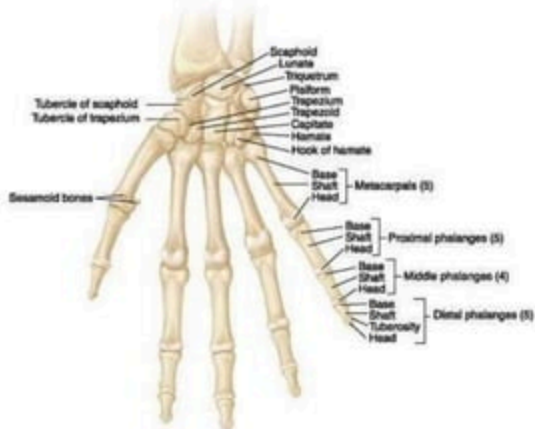




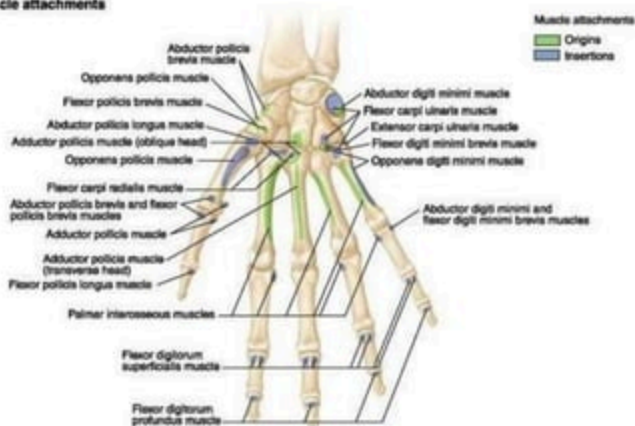
Superior ulnar collateral artery  
 Medial intermuscular septum  
 Ulnar nerve  
 Triceps brachii tendon (cut)  
 Medial epicondyle of humerus  
 Posterior ulnar recurrent artery  
 Olecranon of ulna  
 Flexor carpi ulnaris muscle  
 Extensor carpi ulnaris muscle (cut)  
 Posterior interosseous artery  
 Extensor pollicis longus muscle  
 Extensor indicis muscle  
 Perforating branch of anterior interosseous artery  
 Extensor digitorum tendons (cut)  
 Extensor digiti minimi tendon (cut)  
 Extensor retinaculum  
 Extensor carpi ulnaris tendon  
 5th metacarpal bone  
 Extensor indicis tendon  
 Insertion of extensor digitorum tendons (central bands)  
 Insertion of extensor digitorum tendons (lateral bands)

Middle collateral artery  
 Brachioradialis muscle (cut)  
 Extensor carpi radialis longus muscle (cut)  
 Lateral epicondyle of humerus  
 Common extensor tendon (cut):  
 Extensor carpi ulnaris muscle  
 Extensor digiti minimi muscle  
 Extensor digitorum muscle  
 Extensor carpi radialis brevis muscle  
 Anconeus muscle  
 Interosseous recurrent artery  
 Supinator muscle  
 Deep branch of radial nerve  
 Pronator teres muscle  
 Radius  
 Posterior interosseous nerve  
 Abductor pollicis longus muscle  
 Extensor pollicis brevis muscle  
 Extensor carpi radialis brevis tendon  
 Extensor carpi radialis longus tendon  
 Abductor pollicis longus tendon  
 1st metacarpal bone  
 Radial artery  
 Extensor pollicis brevis tendon  
 Extensor pollicis longus tendon

## A. Bones

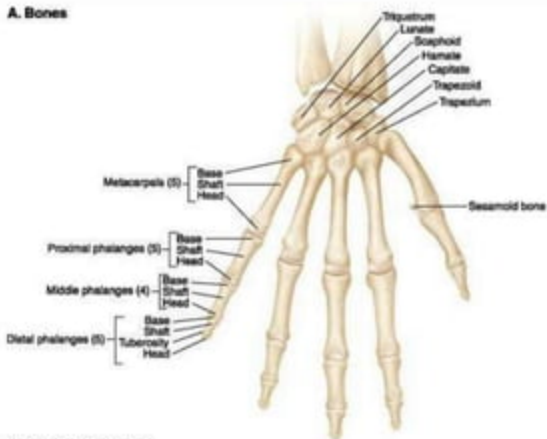


## B. Muscle attachments

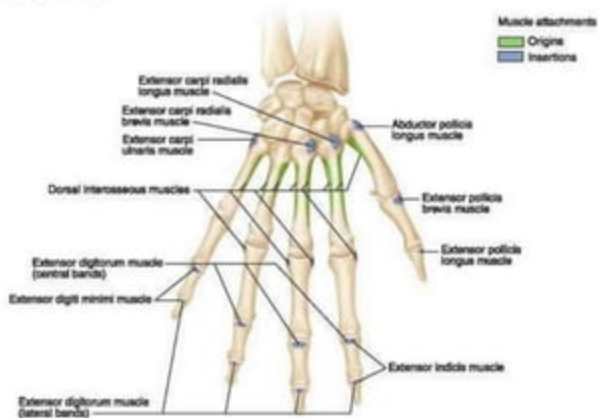




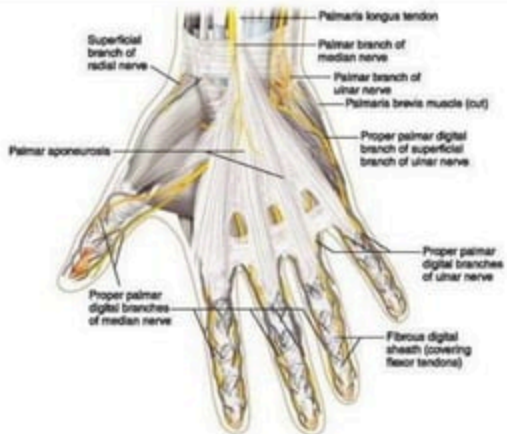
## A. Bones



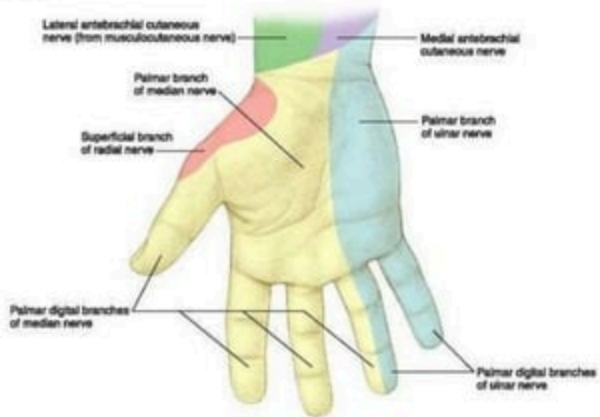
## B. Muscle attachments



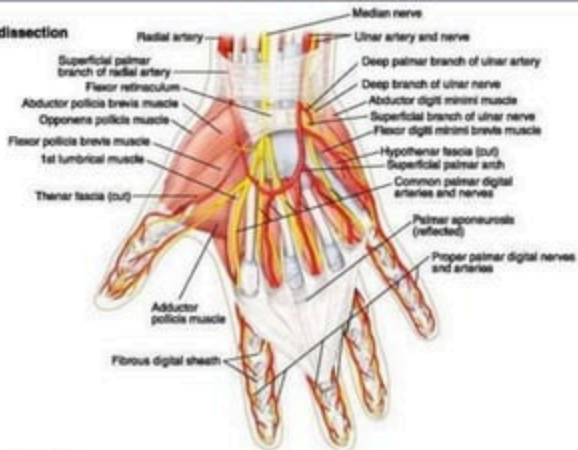
### A. Dissection



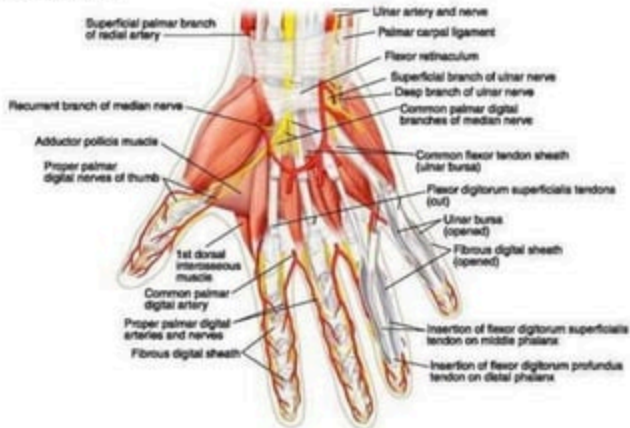
### B. Nerve territories



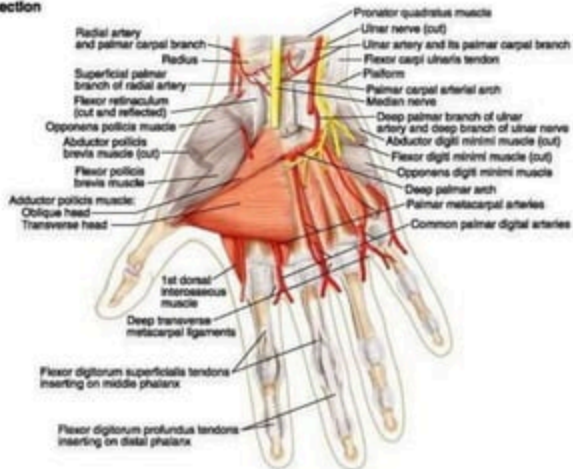
## A. Superficial dissection



## B. Intermediate dissection



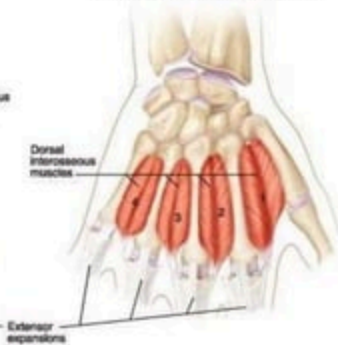
## A. Deep dissection



## B. Palmar interosseous muscles



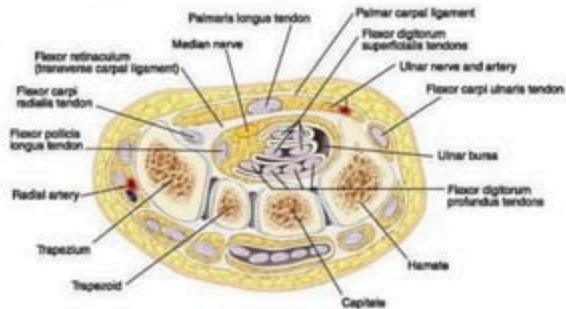
## C. Dorsal interosseous muscles



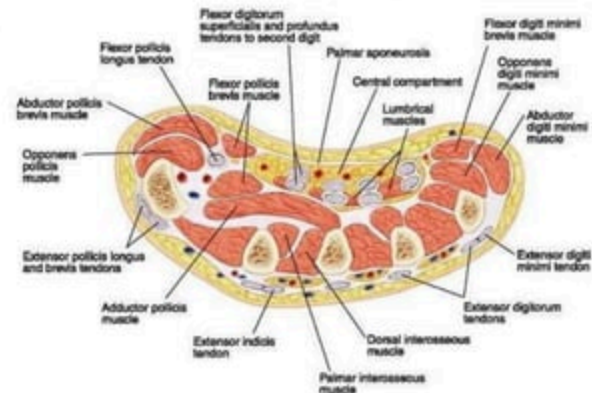
### A. Orientation



### B. Wrist



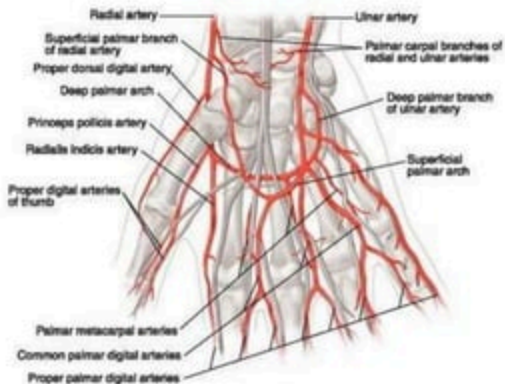
### C. Palm



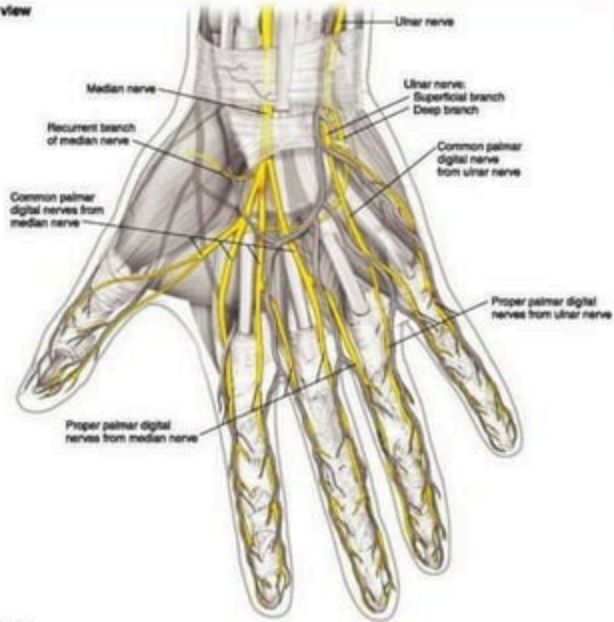
### A. Superficial view



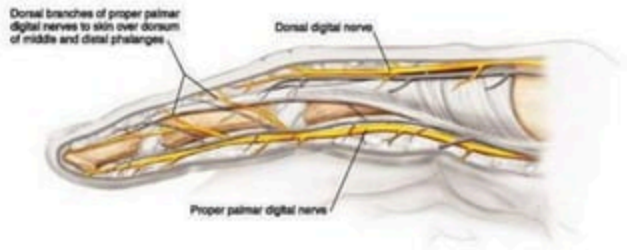
### B. Deep view



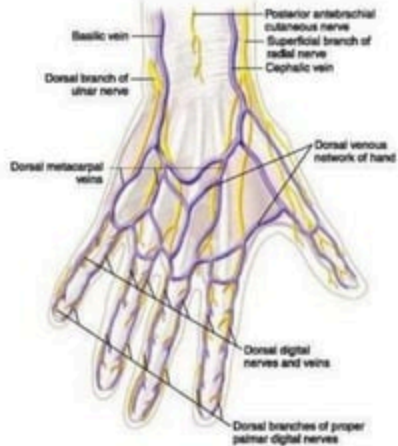
**A. Anterior view**



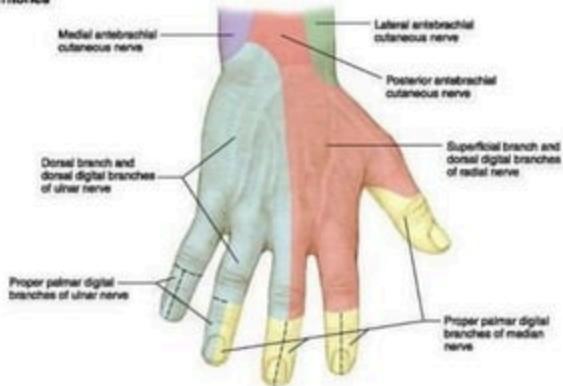
**B. Lateral view**



## A. Dissection

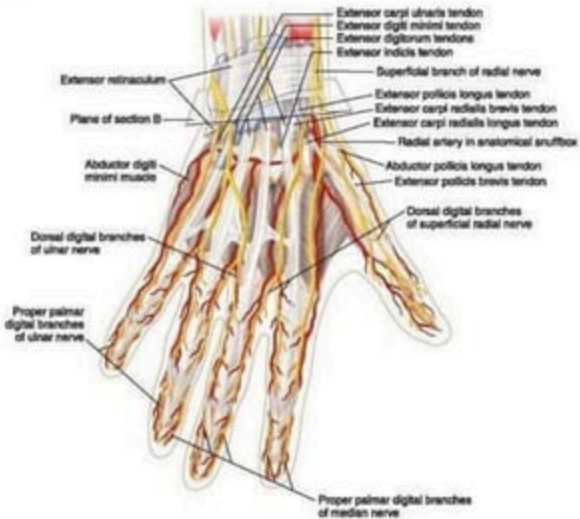


## B. Nerve territories

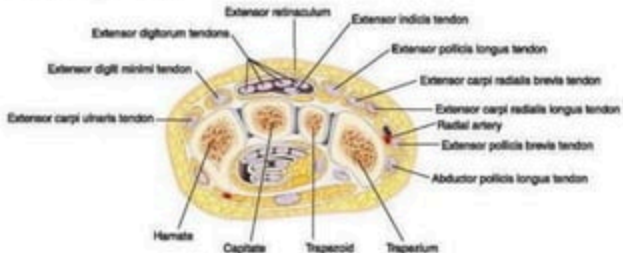




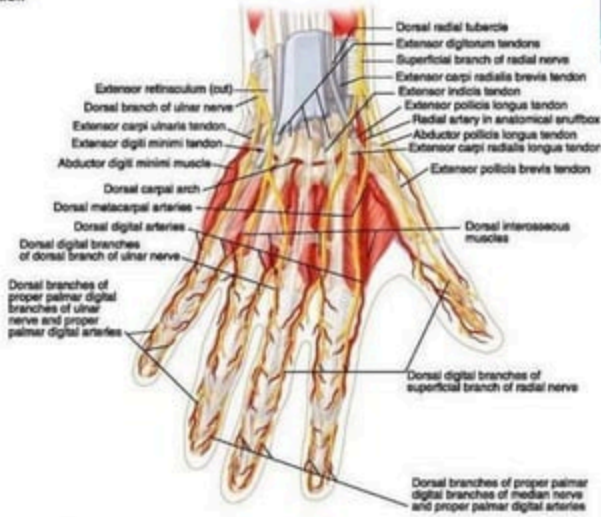
## A. Dissection



## B. Cross section through the wrist



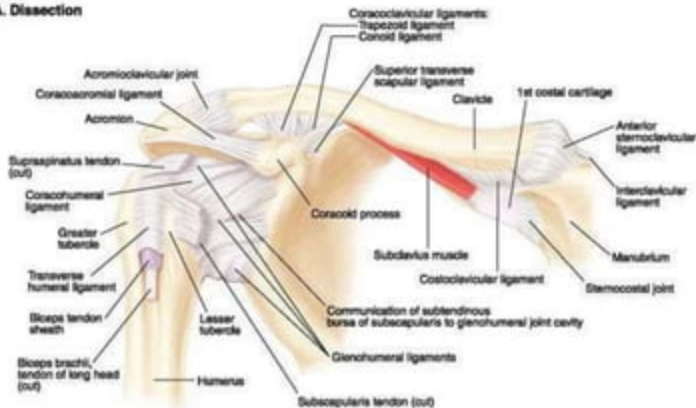
**A. Dissection**



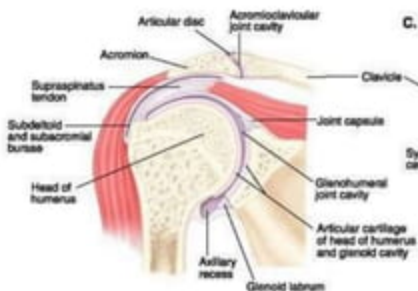
**B. Extensor expansion, right index finger**



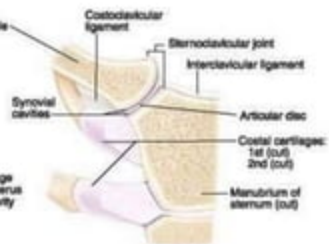
## A. Dissection



## B. Shoulder joint, coronal section



## C. Sternoclavicular joint, coronal section



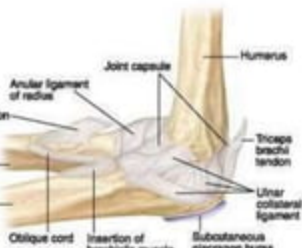
### A. Anterior view



### B. Lateral view



### C. Medial view



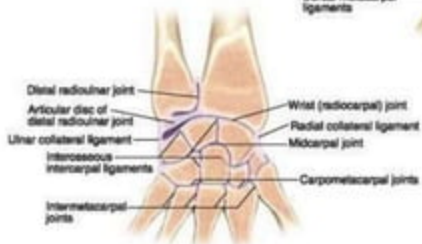
### A. Anterior view



### B. Posterior view



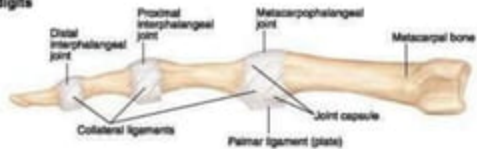
### C. Coronal section, posterior view



### A. Anterior view

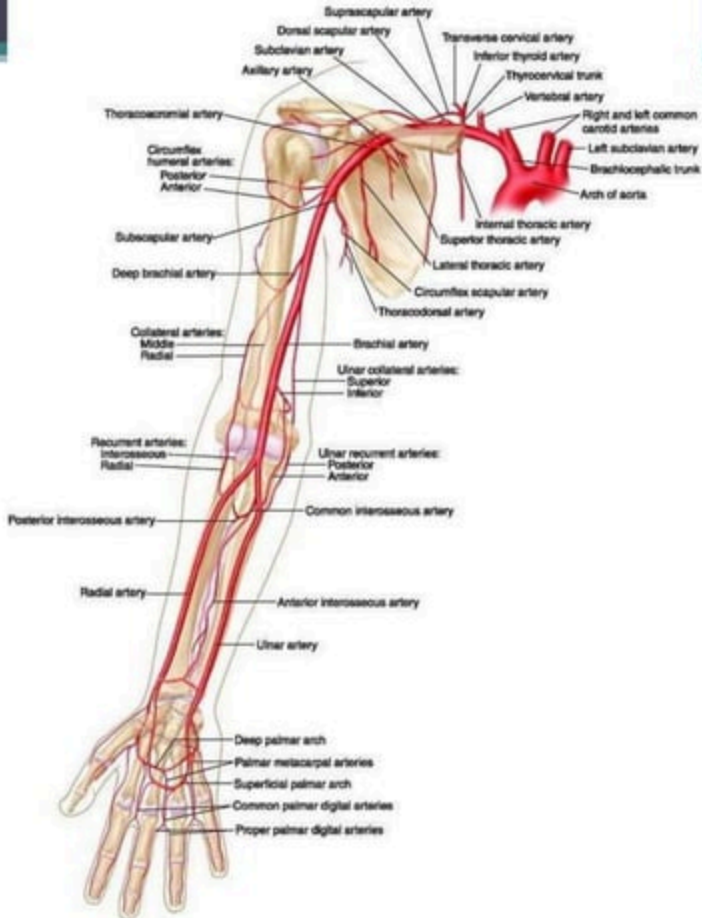


### B. Joints of the digits

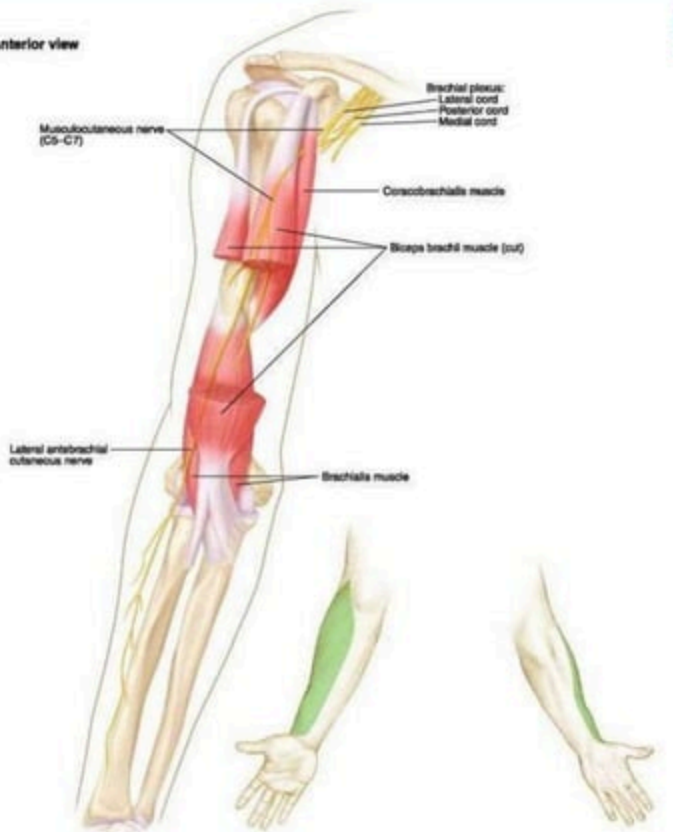


### C. Extensor expansion





**A. Anterior view**

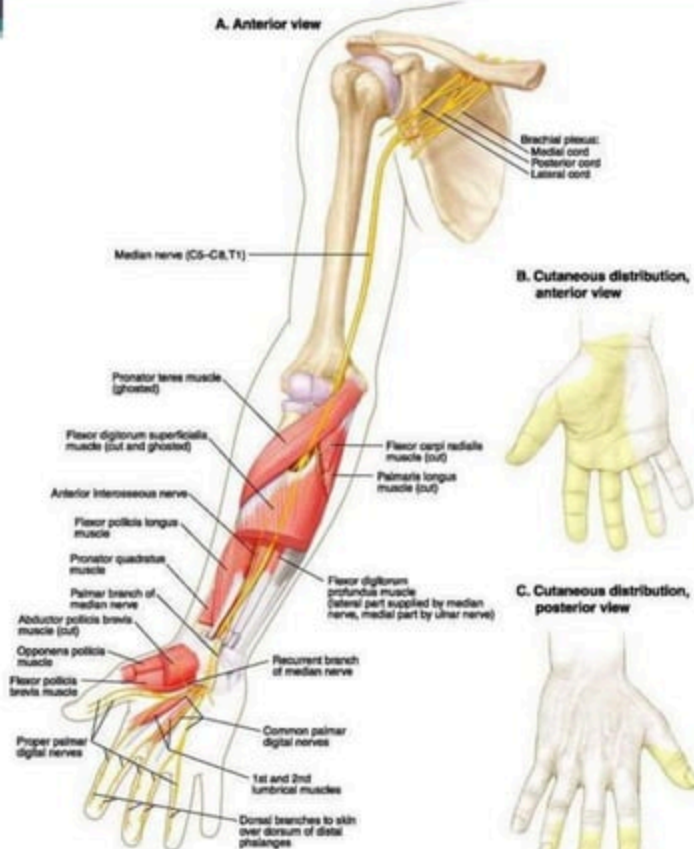


**B. Cutaneous distribution, anterior view**

**C. Cutaneous distribution, posterior view**



### A. Anterior view

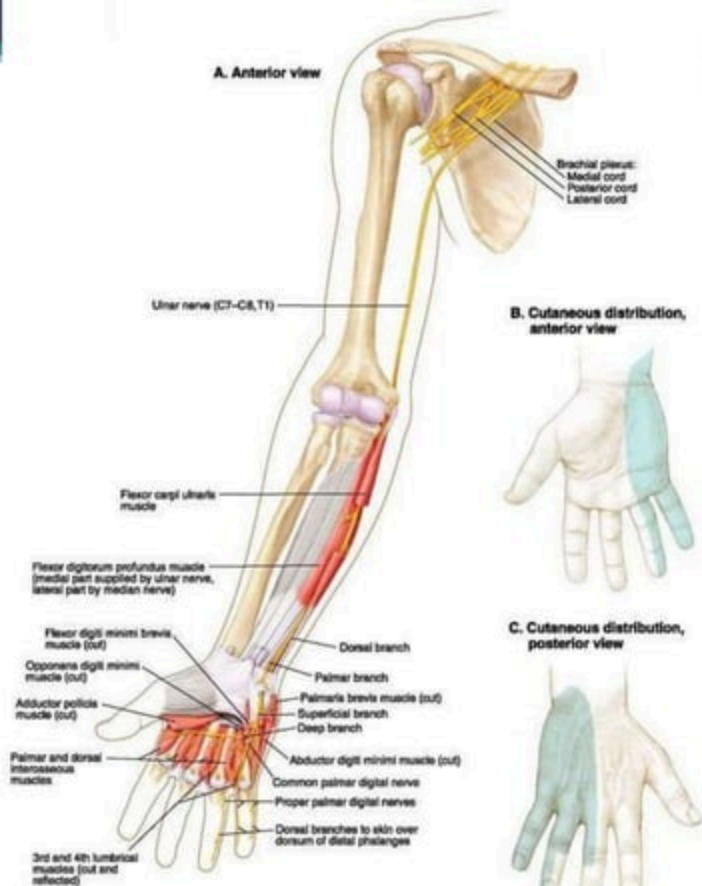


### B. Cutaneous distribution, anterior view

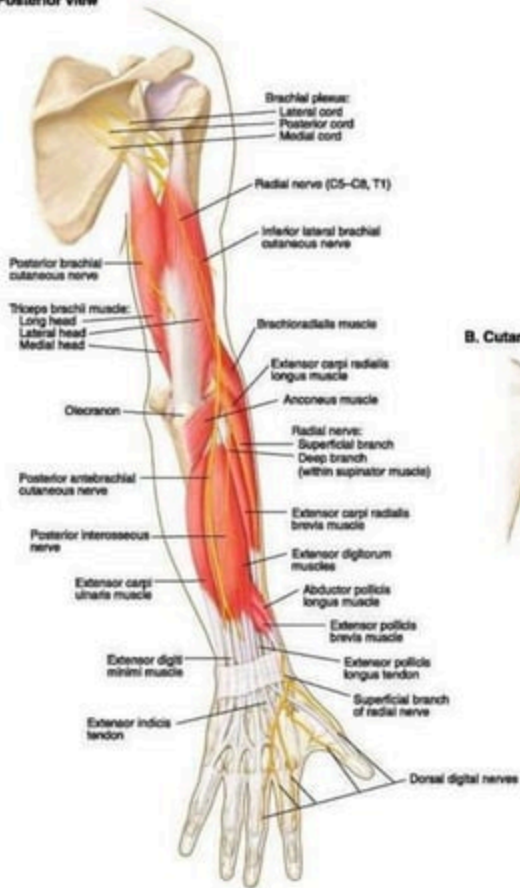


### C. Cutaneous distribution, posterior view





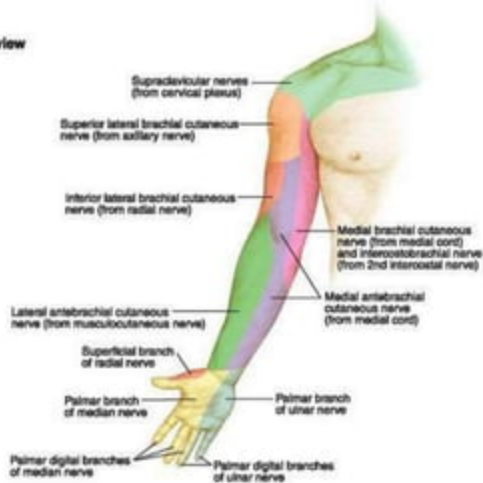
### A. Posterior view



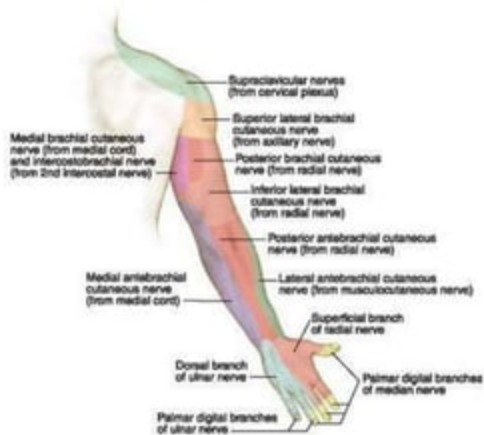
### B. Cutaneous distribution



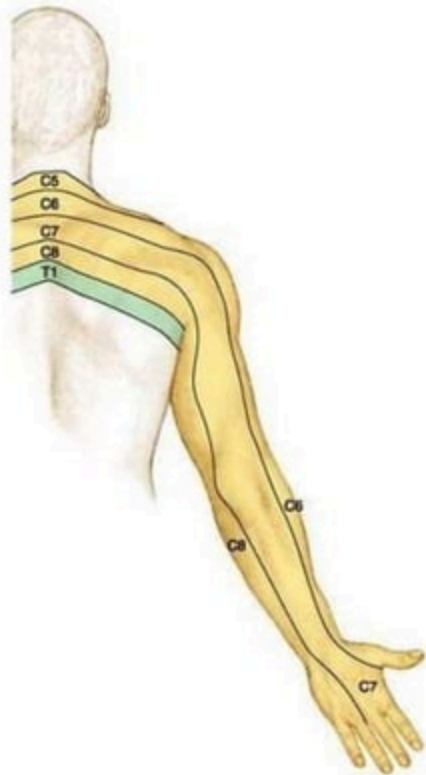
## A. Anterior view



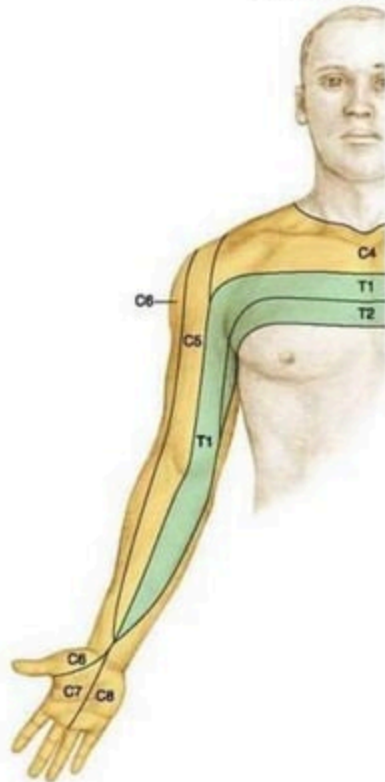
## B. Posterior view

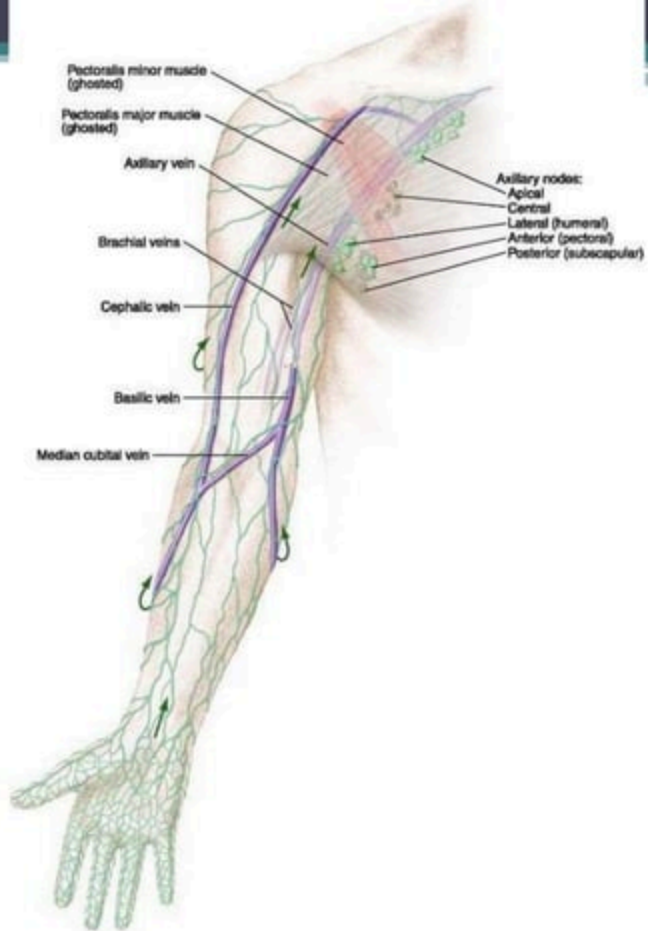


A. Posterior view



B. Anterior view







**THANKS YOU!**