

SKULL

Upload By : Ahmed Ali Abbas

Babylon University College of Dentistry

download this file from Website on Google

TheOptimalSmile.wix.com

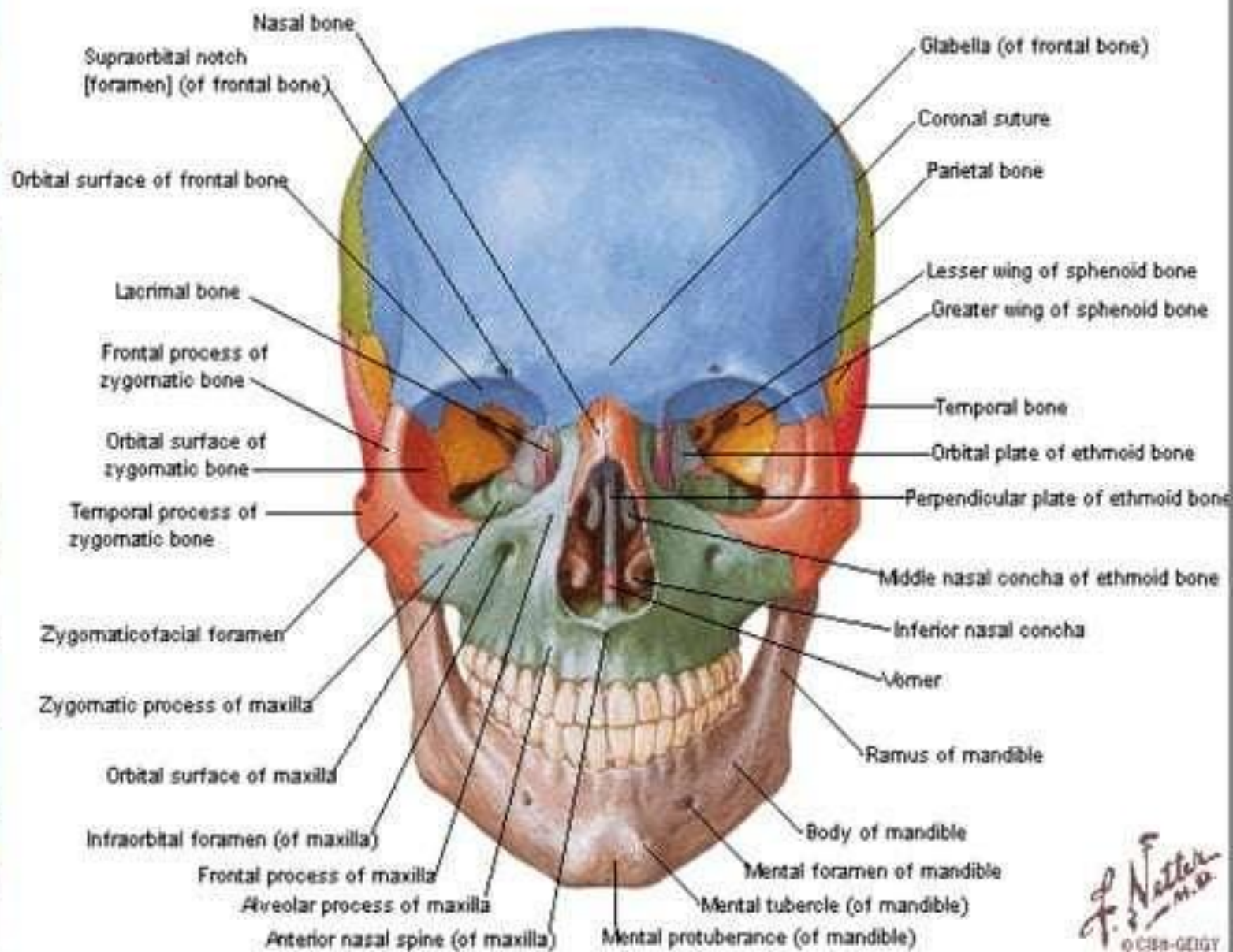
choose Lectures

Then Second Stage

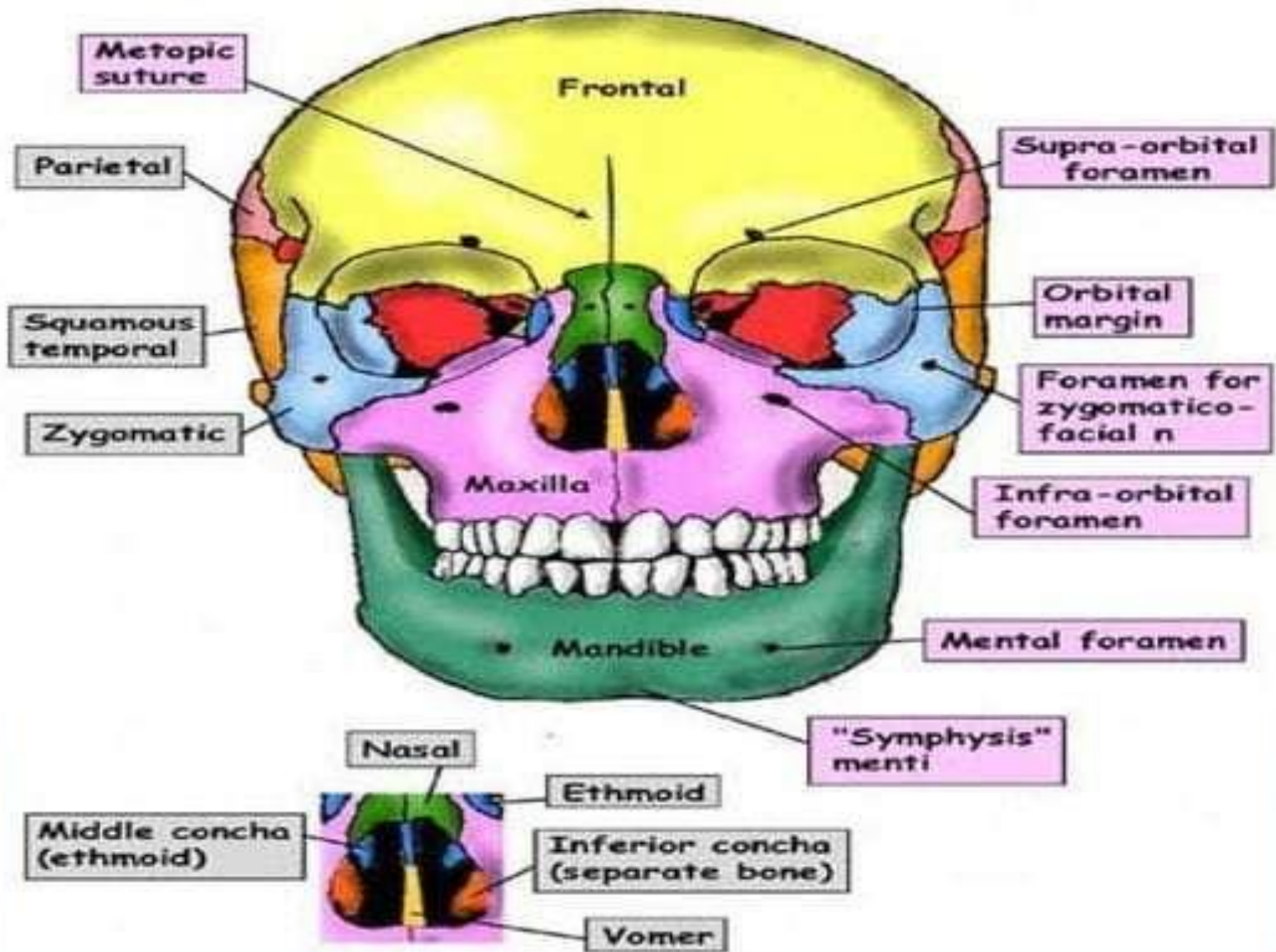
Then choose the lecture you need

Skull

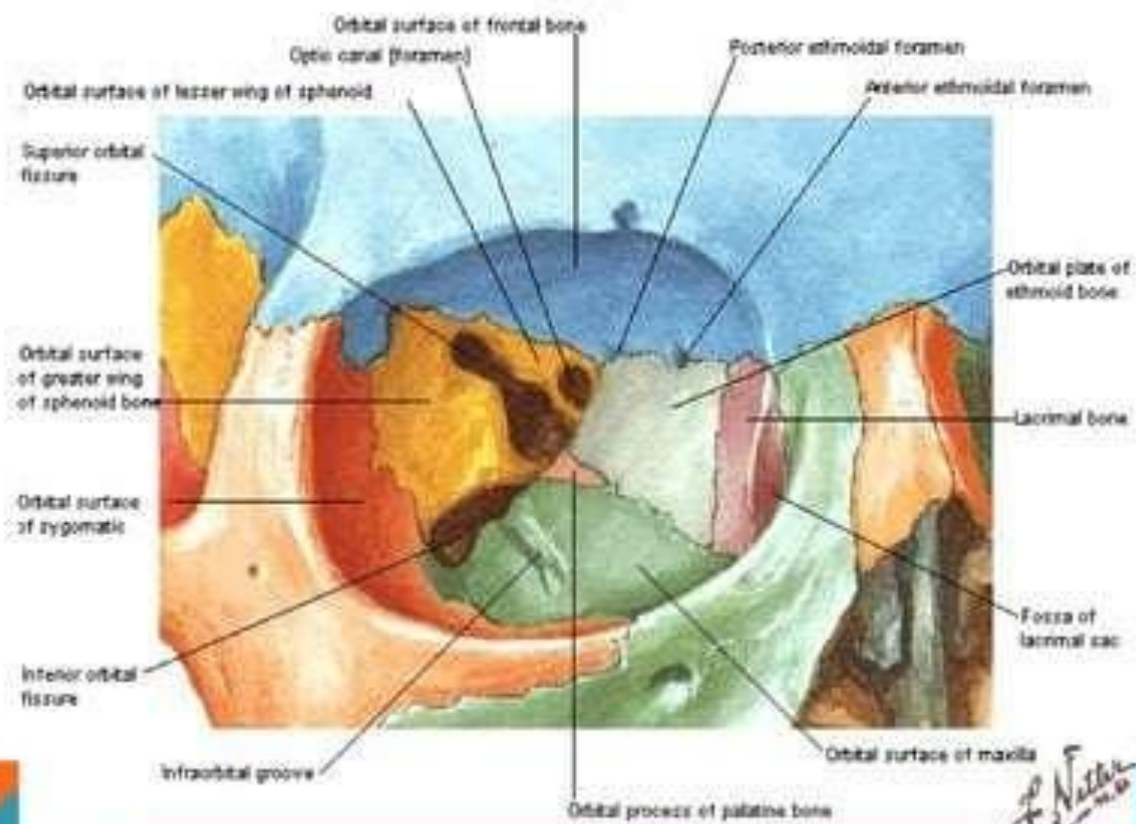
Anterior View



ANTERIOR VIEW OF SKULL TO SHOW BONES & OTHER FEATURES



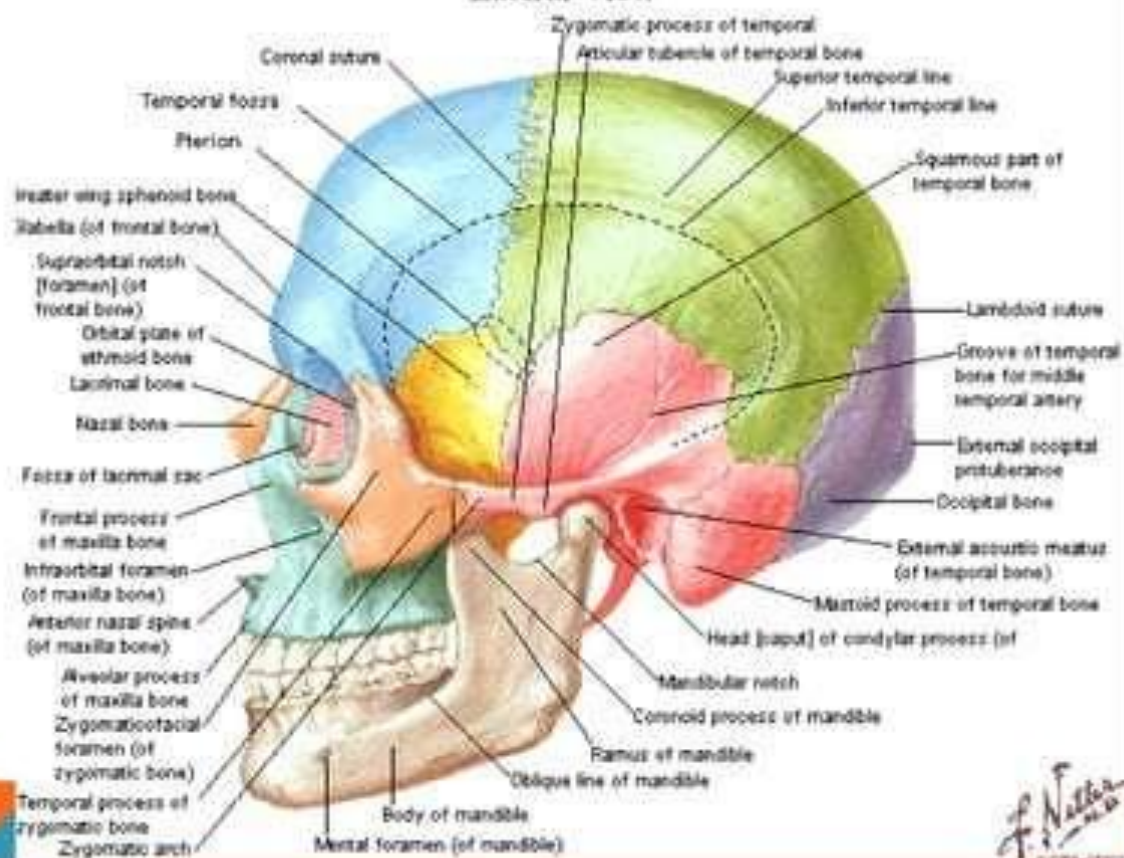
Right Orbit Frontal and Slightly Lateral View



F. Netter M.D.
© 1989-2011

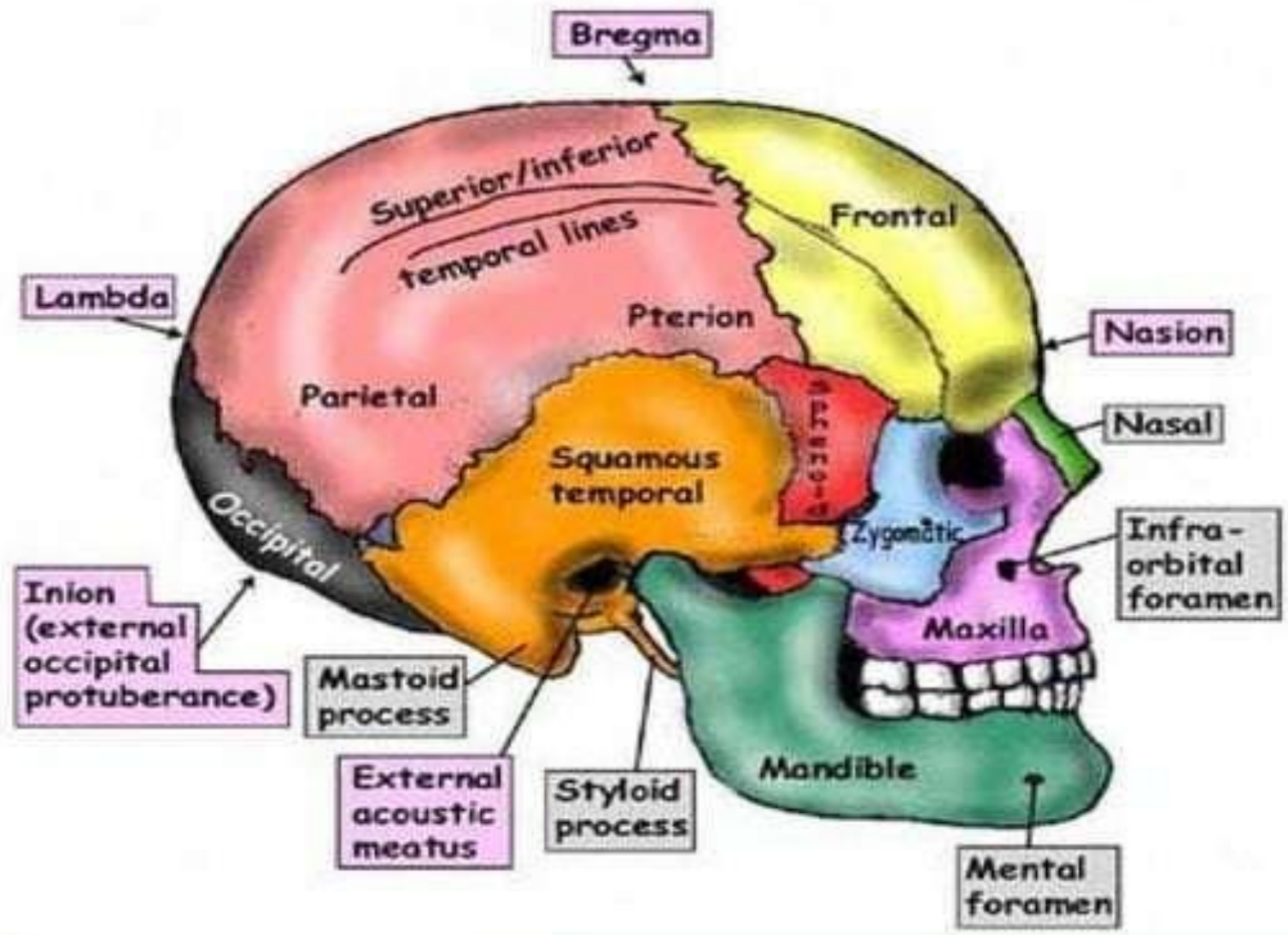
Skull

Lateral View

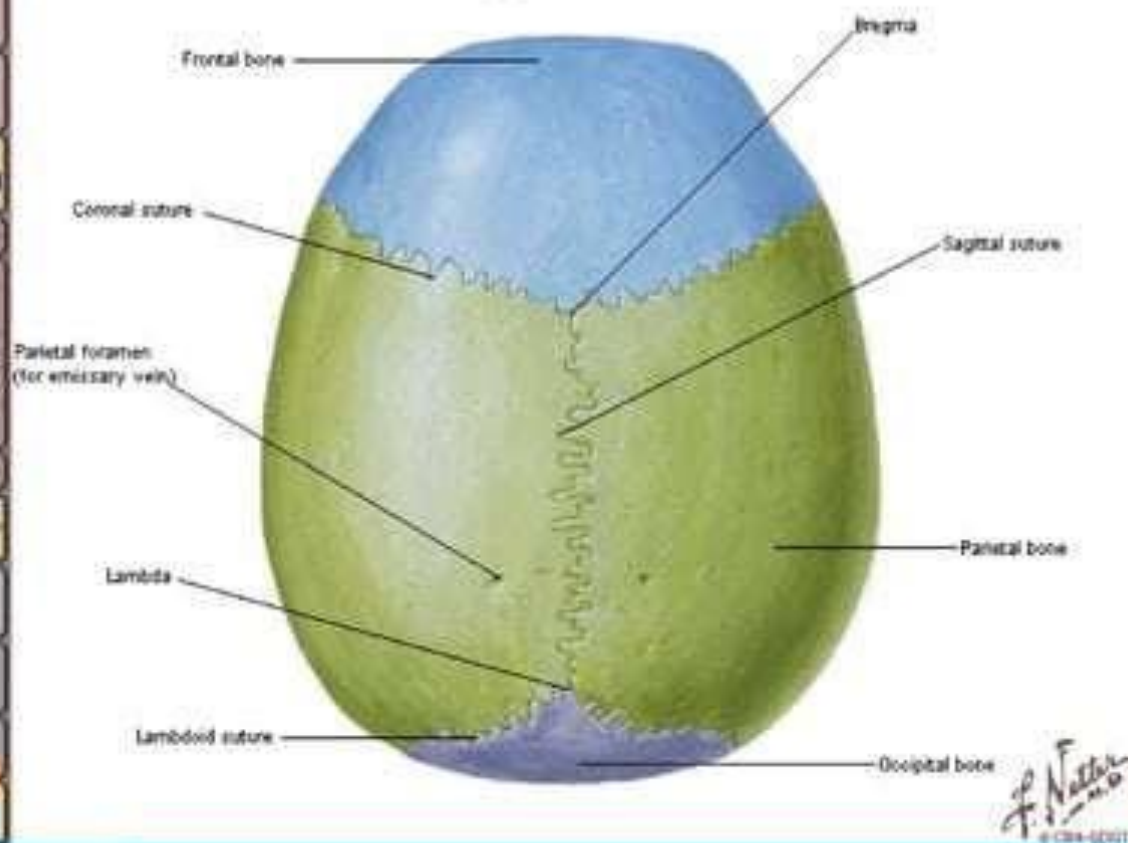


F. J. Netter M.D.
© 1989-2001

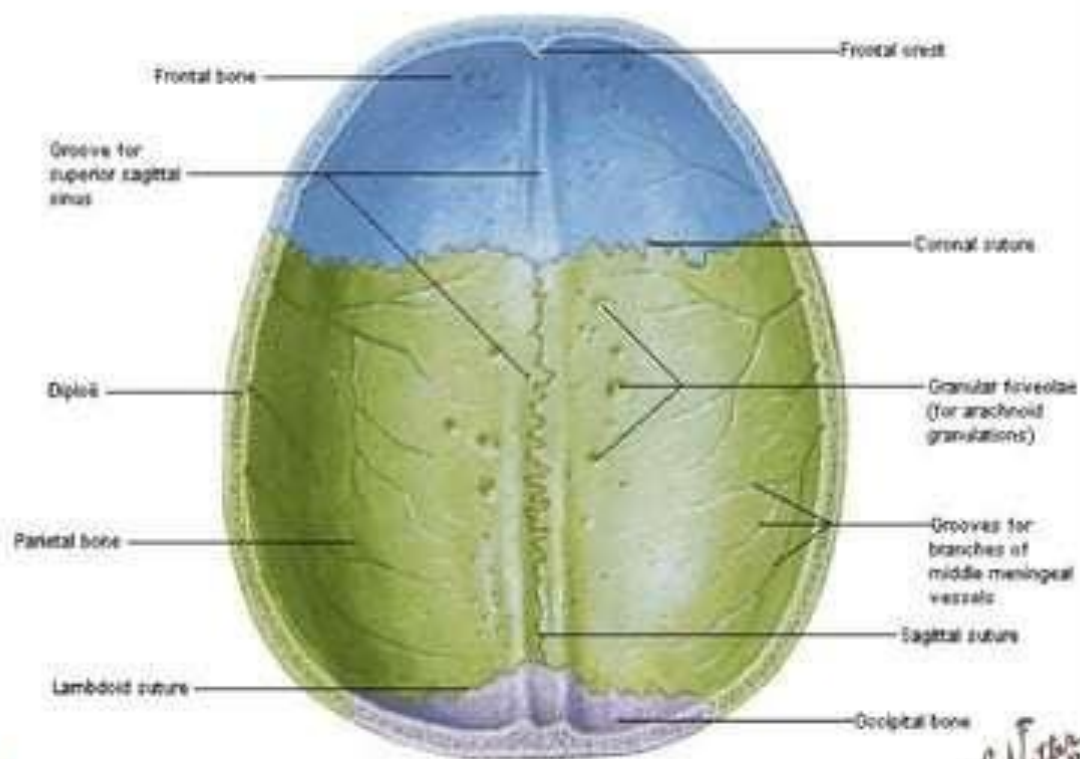
LATERAL VIEW OF SKULL TO SHOW BONES & OTHER FEATURES



Calvaria Superior View

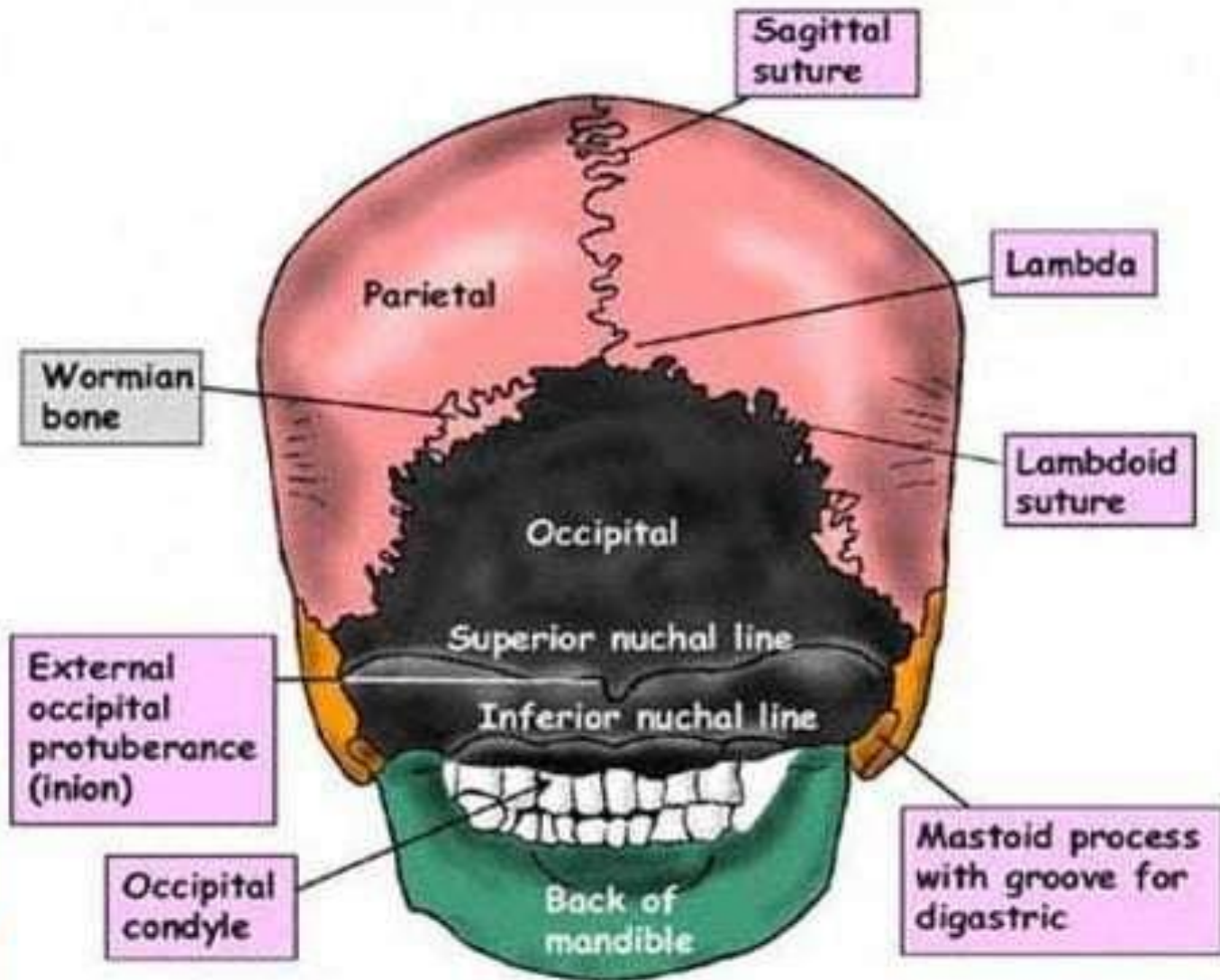


Calvaria Inferior View



F. Netter
M.D.
© 1984-2007

POSTERIOR VIEW OF SKULL TO SHOW BONES & OTHER FEATURES



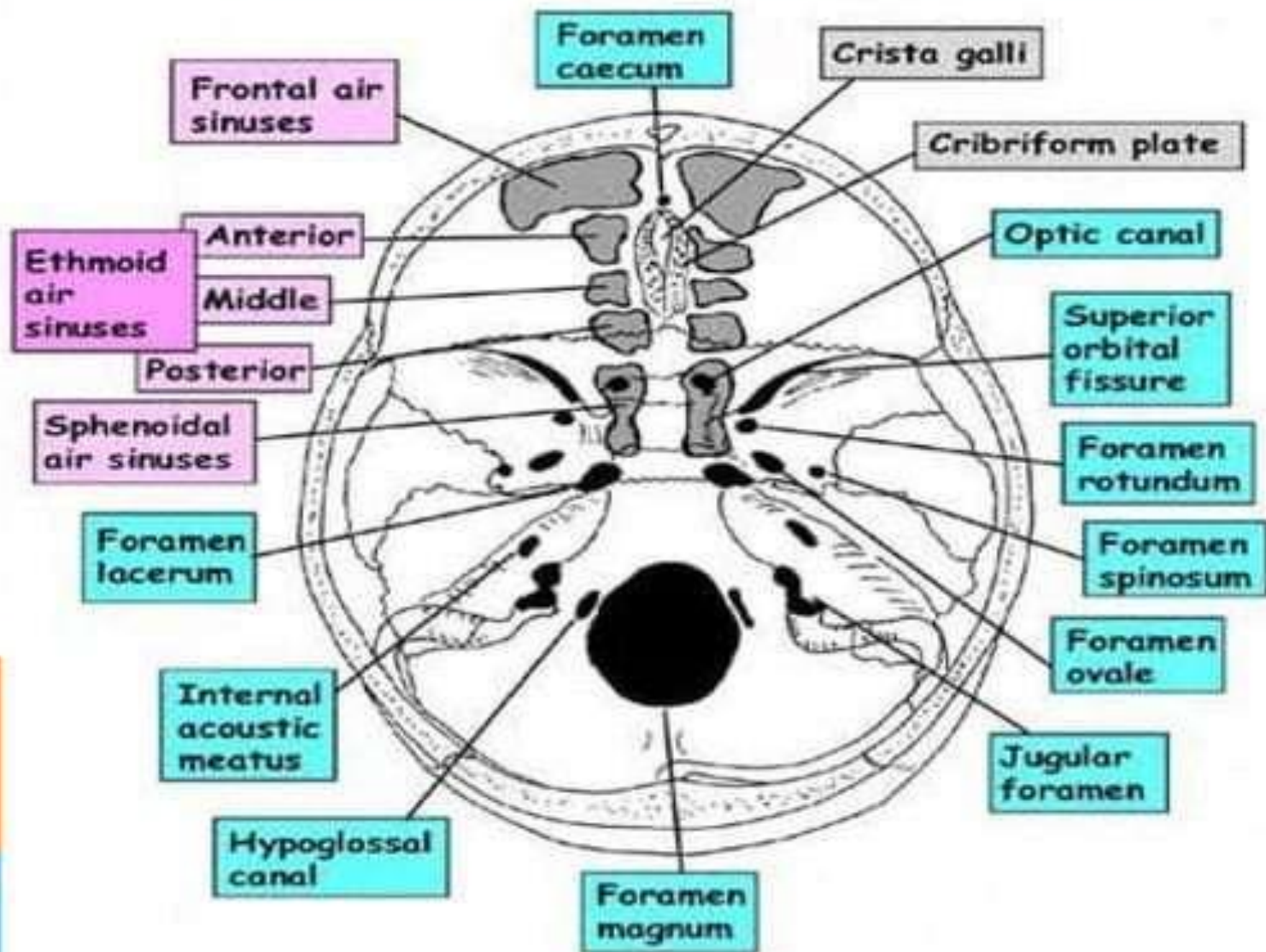
INTERIOR OF THE SKULL) (CRANIAL FOSSA



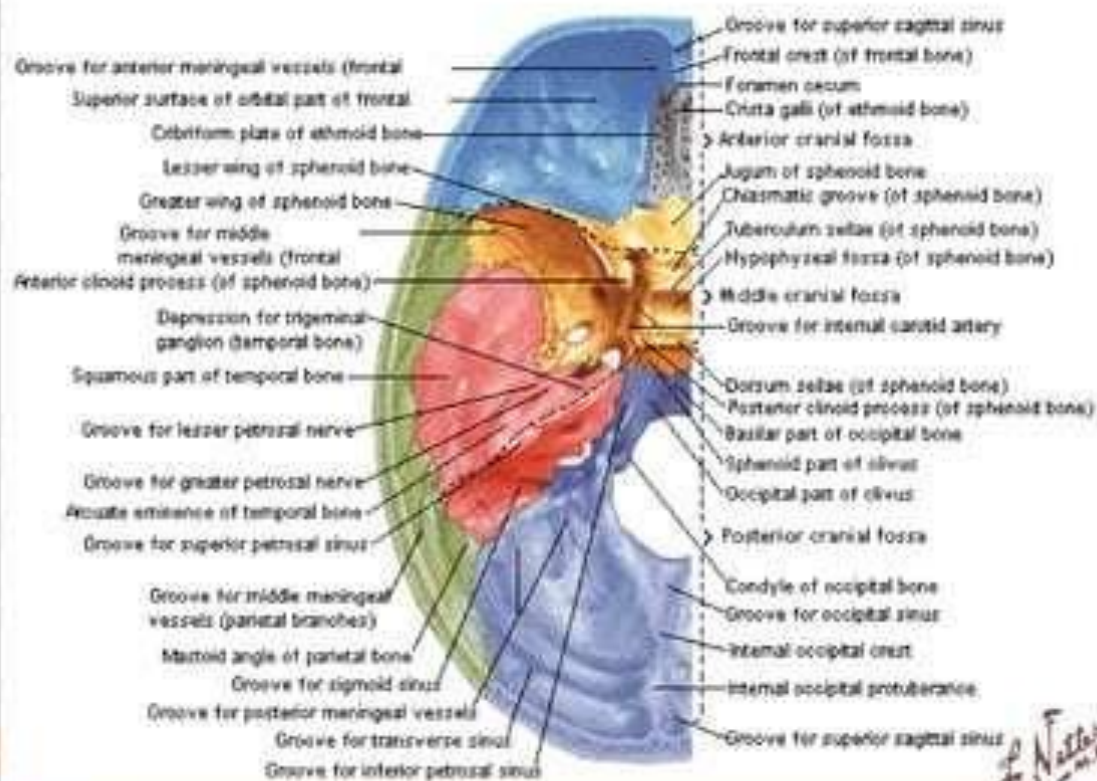
A- ANT. CRANIAL FOSSA

- .Sup. ___ frontal bone
- .Antero. Lat. ___ frontal bone
- Post. ___ lesser wing of sphenoid
- Inf. ___ orbital plate of frontal

**INTERNAL VIEW OF BASE OF SKULL
TO SHOW SINUSES AND FORAMINA**



Bones of Cranial Base Superior View



FORAMINA IN ANT. CRANIAL FOSSA

E.caecum: in front of crista galli , in the median plane at fronto-- 1
ethmoidal suture . Transmitting emissary veins from
• upper nose to the sup.sagittal sinus , but it's usually blind

Olfactory F.: in the cribriform plate of ethmoid , 15-20 in number on each side, for passage of olfactory n. from upper 1/3 of nose to olfactory bulb

-2

Ant. and Post. Ethmoid F- 3

Ant.: in the suture joining lateral margins of cribriform plate of ethmoid , and orbital plate of frontal , behind crista galli

-

Post.: in the posterolateral of cribriform plate of ethmoid where it's articulates with jugum of sphenoid

-

Both ant. and post. ethmoid f. , transmit

CLINICAL NOTES

Fractures of anterior cranial fossa

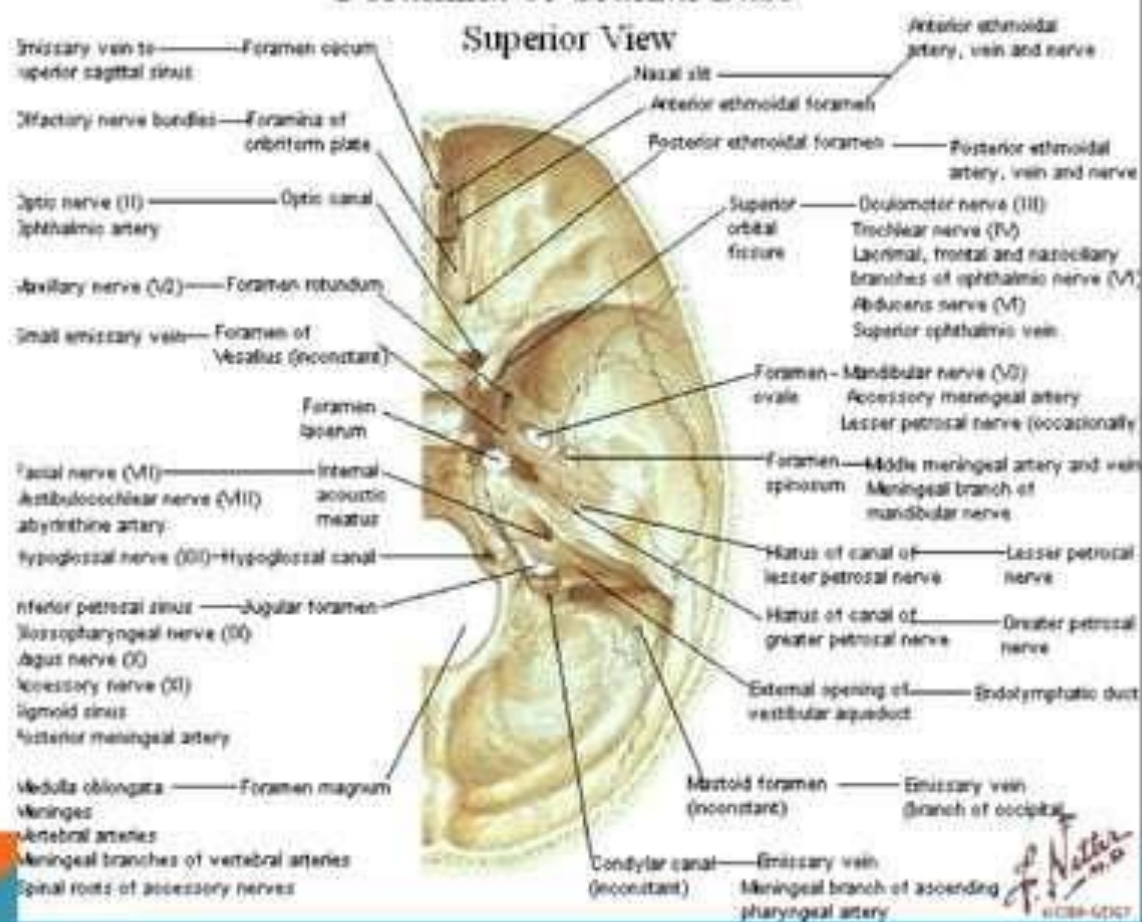
Involve cribriform plate lead to epistaxis accompany by discharge*
. of C.S.F and loss of smell

Fracture involve orbital plate of frontal bone lead to**
subconjunctival which may lead or produce exophthalmus or
.frontal sinus may involved

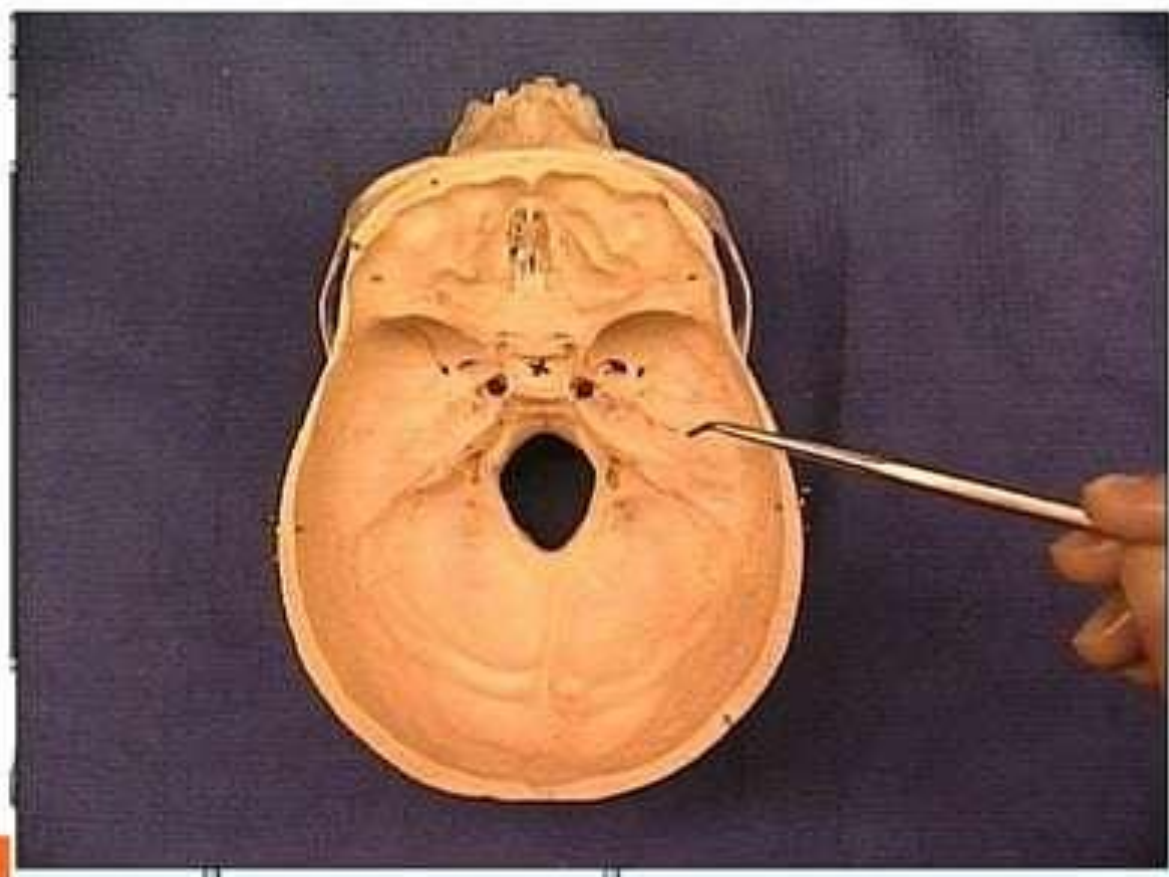


Foramina of Cranial Base

Superior View



F. Netter M.D.
© 1989-2007



FORAMINA IN MIDDLE CRANIAL FOSSA

Optical canal: in the sphenoid between the body and two roots of lesser wing. Transmit- optic n. and ophthalmic artery inferolateral to the n

Sup. Orbital fissure: in the sphenoid, between body and two wings. - 2
Transmit- oculomotor, trochlear, abducent nerves
. lacrimal, frontal, nasociliary nerves, superior of ophthalmic vein

F. Rotundum: In the greater wing of sphenoid infero lateral to medial -3
.end of sup. Orbital fissure .transmits max. division of V nerve

F. Ovale: in the greater wing of sphenoid ,postero- lateral to f. rotundum , -4
.opens in the base of skull at the root of L. pterygoid plate

Transmits- mand. n. , lesser petrosal n. , accessory meningeal art. and
.emissary veins from cavernous sinus to pterygoid plexus

Carotid canal: Internal carotid artery enters and reaches the side of the body of the sphenoid, then enters the cavernous sinus to reach the region of the anterior clinoid process.

CLINICAL NOTES

.Fractures in middle cranial fossa is common site of fractures of skull
Because of its position and weakened by numerous foramen and
canals, so frequently tegman tympani if fracture and tympanic
.membrane is torn,so blood and C.S.F are discharged from ear

:C- POST. CRANIAL FOSSA

Ant. ___ post part of petrous of temporal

Lat. ___ parietal and mastoid process of temporal

Post. ___ occipital

Inf. ___ foramen magnum

largest and deepest cranial fossa and lodges the hindbrain
(cerebellum, pons, medulla oblongata)

**

FORAMINA IN POST. CRANIAL FOSSA

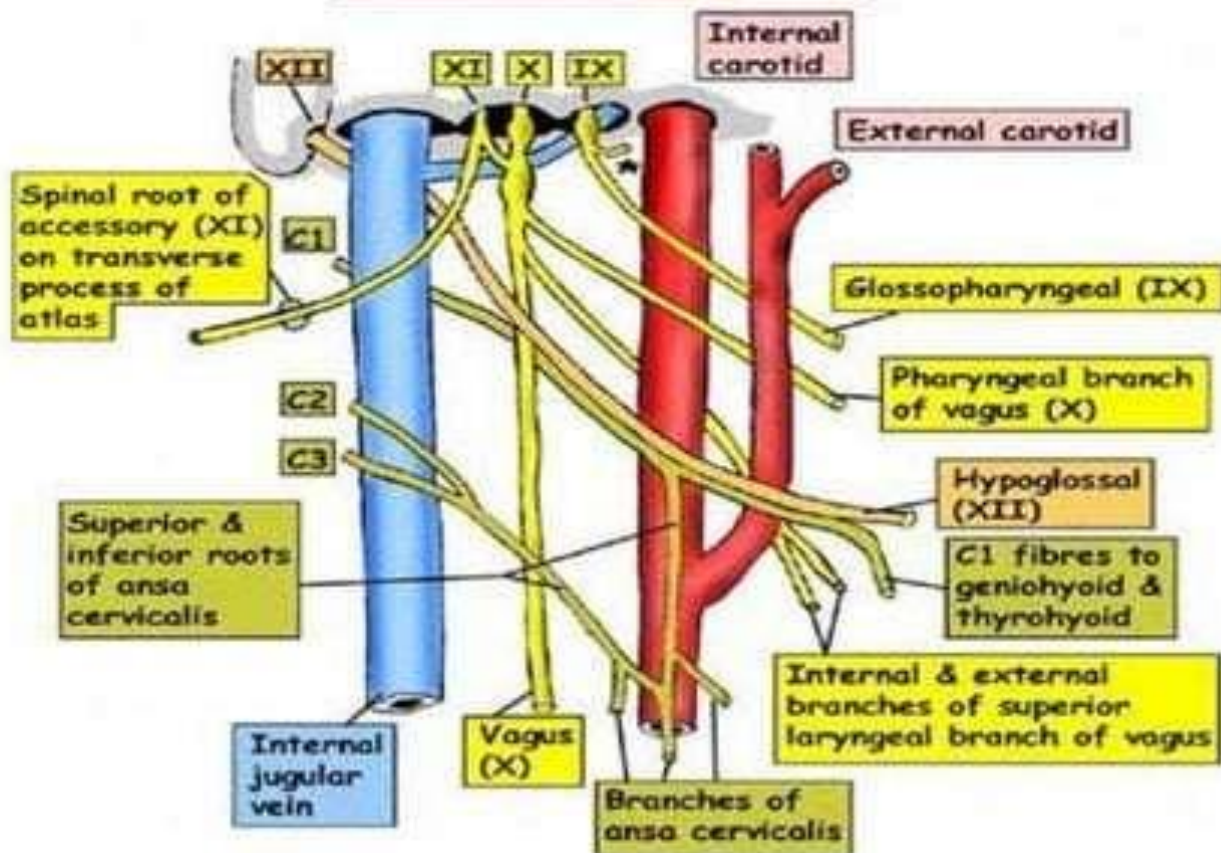
Int. acoustic meatus: in post sur. of petrous temporal -1

. Transmit- Facial , vestibulocochlear nerves , labyrinthine artery

. Jugular F.: between jugular f. and occipital b -2

Transmits- 9,10,11th , inf petrosal sinus , IJV , menigeal branch of occipital artery

JUGULAR FORAMEN EXPLODED VIEW



- The vagus lies most medial in the foramen
 - Glossopharyngeal nerve & inferior petrosal sinus exit from the anterior compartment of the foramen
 - Vagus & accessory nerves exit from the middle compartment
 - The sigmoid sinus exits from the posterior compartment, is soon joined by the inferior petrosal sinus to become the internal jugular vein
- * = Tympanic branch of IX (Jacobson's nerve)

Hypoglossal canal: in occipital b. above ant. part of condyle . transmit-
hypoglossal n. and it's meningeal branch and also emissary
.veins from basilar plexus of veins to IJV

-3

Condylar canal: from the lower part of sigmoid groove in lateral of
occipital b. to condylar fossa on ext. sur. of occipital b. behind the
condyle . transmits emissary veins (from sigmoid sinus to occipital
.veins and meningeal branch of occipital artery

-4

Mastoid F.: in petrous temporal near post. margin of lower part of sigmoid -5
.groove , passing backwards to open behind mastoid process

Transmits - emissary veins (from sigmoid sinus to occipital veins) , also
. meningeal branch of occipital artery

:CRANIAL NERVES

Olfactory n. ____ smell sense- 1

Optic n. ____ sight- 2

Oculomotor ____ muscles of eye ball- 3

.Trochlear n- 4

.Trigeminal n- 5

.Abducent n- 6

.Facial n- 7

.Auditory n- 8

.Glossopharyngeal n- 9

.Vagus n- 10

.Accessory n- 11

.Hypoglossal n- 12