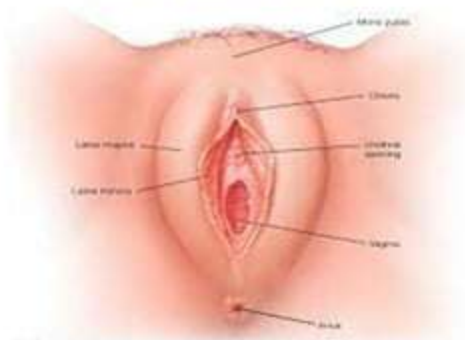


External Genital Organs

The Female External Genital Organs

स्त्री बहिर्जननांग



DR. RAM VEER SHARMA

M.D. Ayu. (PT&SR) I.P.G.T.&R. Jamnagar

MMM Govt. Ayu. College UDAIPUR

Mob. 9414757932

Email. ramveersharma1960@gmail.com

DR. RAM VEER SHARMA

Part's & Name of External Genital organs.

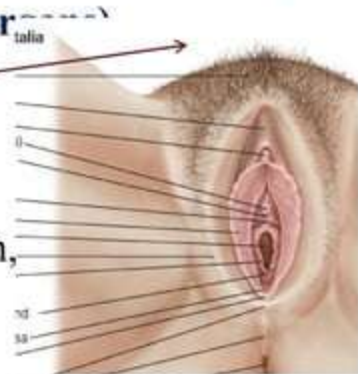
Female external genitalia



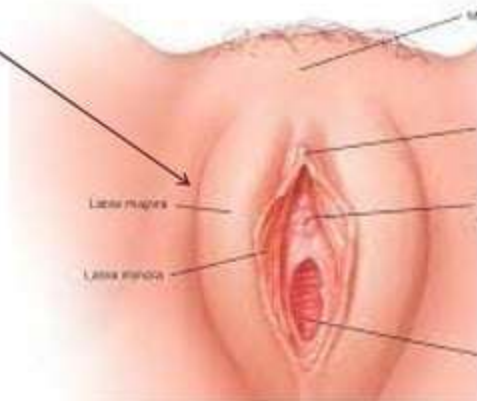
The Vulva (External Genital Organs)

a) Mons Pubis - Pubic Mountain

- Shape - Round,
- Structure - Fatty mass, covered with skin,
- Site - Over the symphysis pubis.
- Changes - Being prominent and hairy at puberty and less prominent after menopause.



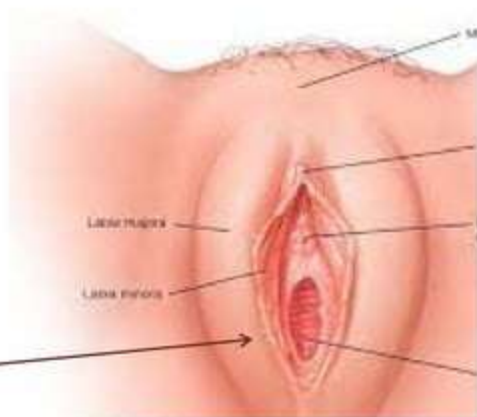
b) Labia Majora



- These are bilateral, represent scrotum in male.
- Arranged longitudinally,
- These are boundaries of **pudendal cleft**, in which the vagina, and urethra opens.

Shape :-

- Prominent Cutaneous folds ,
- Extending from the Mons pubis downwards and backwards to ends at the perineum.



Posterior commissar:

- The connecting folds of skin between posterior end of labia majora.

Structure - It consist of -

- Keratinized skin,
- Hair follicles,
- Sebaceous glands, (Apocrine glands),
- Sweat glands,
- Muscles-Tunica dartos labialis, Fascial layer, fatty & elastic tissues.



Changes -

- After puberty the outer skin covered with hairs & becomes prominent and hyper pigmented.

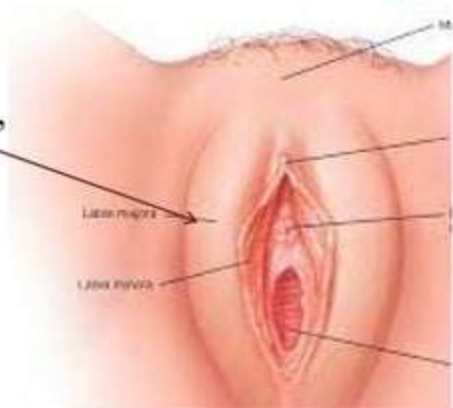
External Genital Organs

c) Labia Minora

- These are bilateral Cutaneous folds,
- Laying between the labia majora.

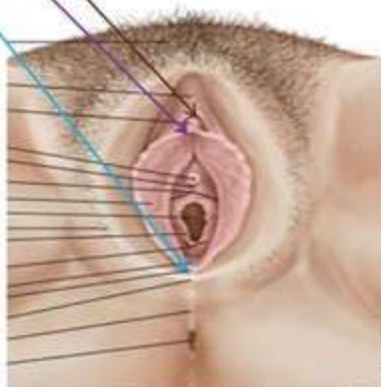
Structure - Consist of -

- Two folds of non keratinized skin,
- Containing veins,
- Elastic tissues,
- Sebaceous glands,
- Apocrine glands, & no hair follicles.



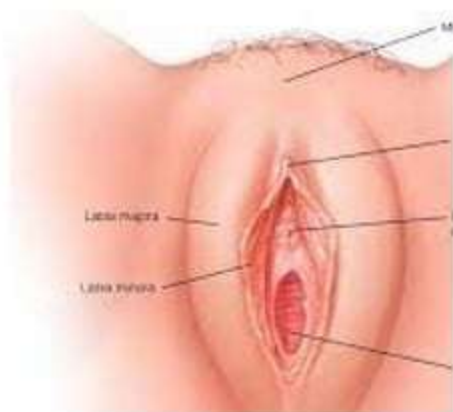
Sub parts of Labia minora -

- **Prepuce** :- Two folds are united each other in front of clitoris.
- **Frenulum** :- United each other in behind of clitoris.
- **Fourchette** :- Posteriorly both labia minora are united in the midline to form a thin ridge of skin.



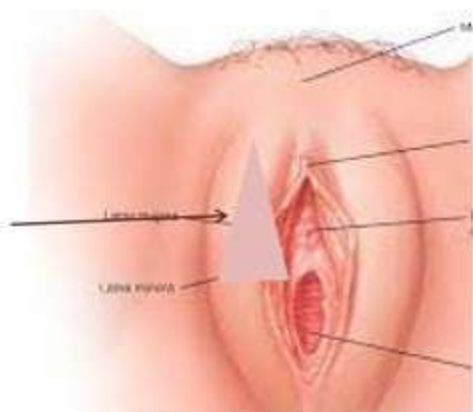
Functions -

- a) They are **erectile** on sexual activity, play a important role in orgasm to female.
- b) Their inner surface generally remains in contact with each other and shut down the pundental cleft, make a **mechanical defense**.



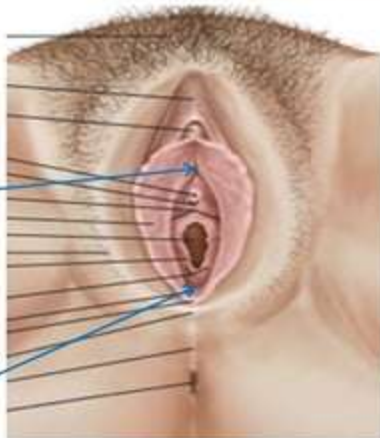
d) Vestibule -

- This is a cleft between the labia minora, in which -
 - Vaginal orifice,
 - External urethral opening,
 - Ducts of Bartholin's glands open.



Vestibular Fossa -

- A triangular area of soft skin,
- Site - Situated in front clitoris,
- in between urethra opening,
- & behind vaginal orifice is opens.

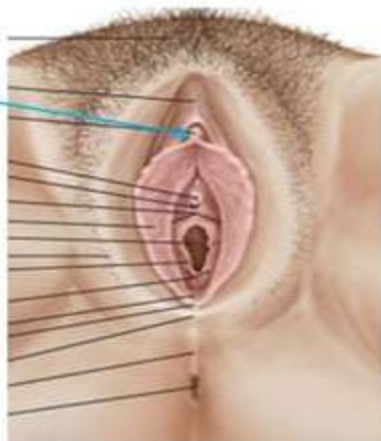


Fossa navicularis -

- A small ovoid Fossa laying between the Fourchette and the posterior hymeneal insertion , it is present only in only nulliparous.

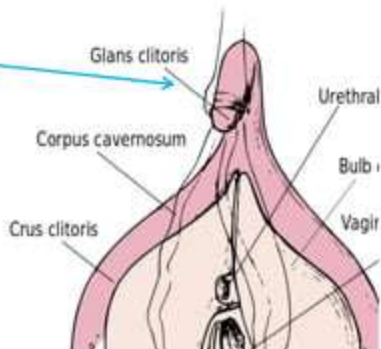
e) Clitoris

- This is lies attached to the under surface of the symphysis pubis by suspensory ligaments.
- This is homologous with penis,
- Measuring - 2.5 Cm.
- **Most erectile structure.**



Parts -

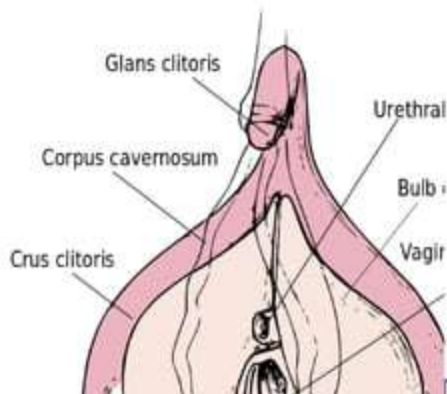
Glans Clitoris



- **Shape** :- Rounded, tubercle like free extremity,
- **Structure** :-Made of erectile tissues, Covered with sensitive stratified squamous epithelium.
- No sebaceous, appocrine glands and hair follicles.

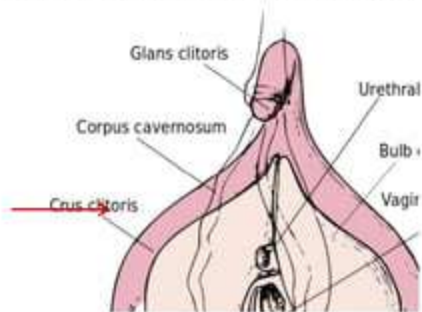
Body:- This is formed by -

- A pair of cylindrical , corpora cavernous muscle fibers (erectile).
- Covered in dense layers of fibrous membrane,
- Attached to the Ischiopubic rami on each side by suspensory ligament.



Crus -

- The ischio cavernosus muscles is inserted to the Crus, and locked in corpus spongiosum like of penis.



Functions :-

- During coitus - It stands up and increased the size like penis, and Play a important role in excitement and orgasm in female,

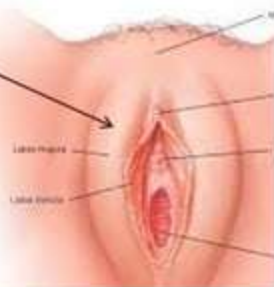
Bartholin's Glands Opening

- 
- Prepuce
 - Glans clitoris
 - Labia minora
 - Corpus cavernosum
 - Bulb of vestibule
 - Urethral opening
 - Labia majora
 - Vaginal opening
 - Opening of right Bartholin's gland

Clitorectomy (Khatana)



f) External Urinary Meatus



- It is an Antero - posterior slit with two lateral lip.
- **Situation** - It is lying in the vestibular Fossa, about - 2.5 cm. behind the glans clitoris.
- Just in front of the anterior margin of the vaginal orifice,
- A group of para - urethral **mucous secreting** glands open into each duct, and duct opens one on either side of posterior wall of urethra just inside the external meatus.

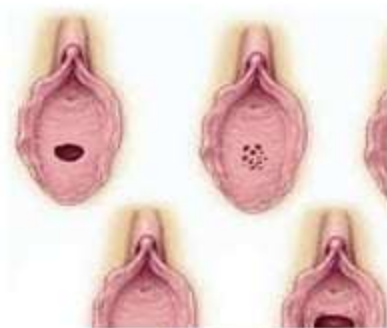
g) Vaginal Orifice



- **Site** - The vaginal orifice lies in the posterior end of the vestibule,
- **Size** - Opening is of various size and shape.
- In virgins & nulliparous, the opening is closed by labia minora, but in parous it may be exposed.

h) Hymen -

- It is an incomplete Muco-fibrous membrane,
- Guarding the vaginal orifice.
- and is continuous laterally with labia minora,
- It has a small a centric opening , not usually permitting the finger tip.



h) Hymen -

Structure -

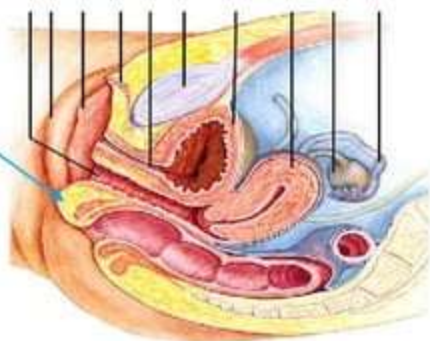
- It consists of double layered stratified squamous epithelium and- intervening vascular , connective tissue.

Changes -

- Coitus causes multiple, radial rupture of hymen, and may lead to brisk hemorrhage.



i) Perineum



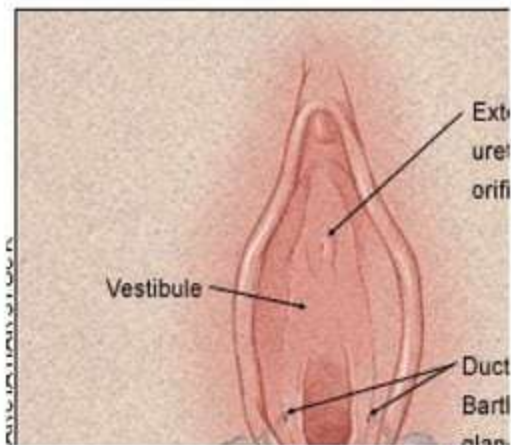
- The less hairy area , between Fourchette in front and anus behind,
- Laying behind the lower fourth of posterior wall of vagina, and in front of anal canal.
- Its breath is about 10 Cm. between Ischial tuberosities.

Structure:- It is pyramidal fibro muscular structure.

j) Bartholin's Glands -

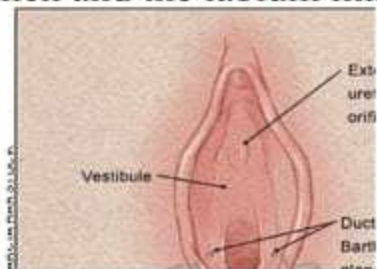
Site:- These are situated in the superficial perineal pouch, close to the posterior end of vestibular bulb.

Size:- Pea size, Oval shape, of about 0.5 Cm. & **Yellow white in color.**



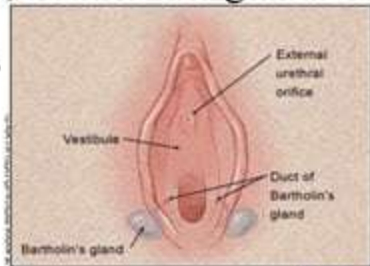
Structure -

- The glands are composed racemose variety and are -
- Lined by columnar epithelium, and - Ducts are opening at the vestibule , shows transition from columnar epithelium to stratified squamous epithelium.
- **The ducts - 2.5cm. long**, are opens at the vaginal orifice at the junction of hymen and the labium minus, near its posterior end.



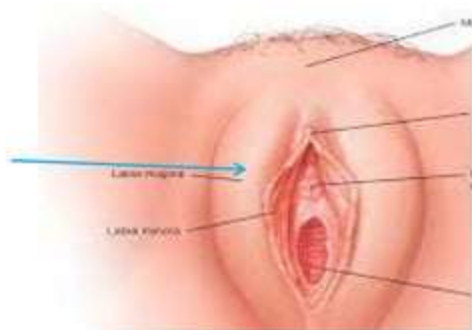
Functions -

- During sexual excitement, it **secretes abundant , alkaline mucus**, to lubricate the vagina and protect from friction with penis.
- Contraction of bulbo cavernosus muscles helps to squeeze the secretion.
- Under normal condition , neither the glands can be palpate nor the ducts are visible.



k) Vestibular Bulb -

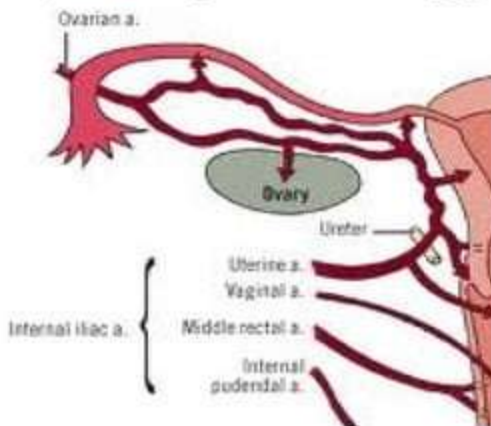
- They are bilateral , 2.5Cm. Long venous erectile masses,
- Lying on either side of vaginal orifice and urethral orifice, in the superficial perineal pouch underneath the labia minora and bulbo cavernosus muscles.



BLOOD SUPPLY

A) Artery Supply -

- a. Internal pudendal artery:- Branches to → Labial, transverse perineal, deep and dorsal arteries to → the clitoris.
- b. Femoral artery: → Superior and deep pudendal artery.



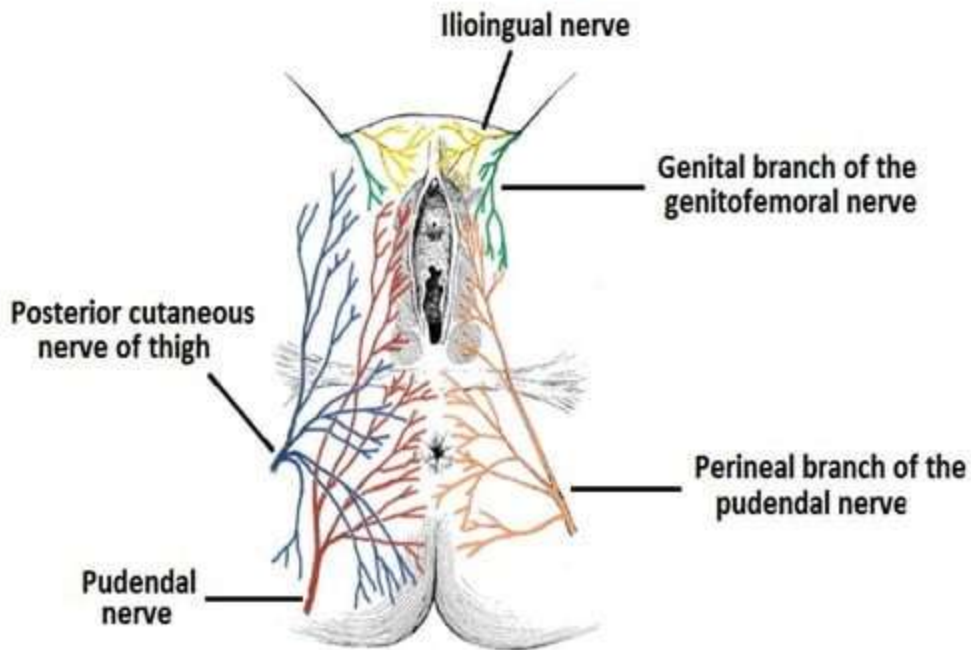
B) Veins Drainage -

- The veins from plexus → drain to → Internal pudendal vein vesicle or vaginal venous plexus
↓
Long saphenous veins

Nerves Supply

- Bilateral spinal somatic nerves.
- **Pudendal nerve**:- From posterior femoral Cutaneous nerve (S2-S3)
 - To posterior part of vulva.
 - Perineal nerve- to → Urogenital triangle,
 - Dorsal nerve of clitoris.
- Ilio inguinal:- L1
- Genito femoral:- L2 → to Mons pubis & forepart of vulva.

Nerve Supply





THANKS

DR. RAM VEER SHARMA